

The Silver Showcase

Volume 400 No. 6

June 2017

Board of Directors

OFFICERS

President: Brenda Englemann

Secretary: Jan Almon

Treasurer: Kaylynn Hawkins

BOARD MEMBERS

Roy Balter

Barbara Behal

Charles Crowley

Denise Kopecki

Gaylynn Olsovsky

Wendy Grant

Frank Starcke

Dr. Dominic Scaramozi, V, D.C.

SILVER CENTER STAFF

Executive Director

Glenda Layton

Administrative Assistant / Volunteer Coordinator

Tammy Dillon

Bookkeeper

Doreen Dunnihoo

Food Service Cooks

Christy Ramos

Nagely Roque

Food Service Asst./Maintenance

Yancey McCartney

Phone: (830) 303-6612

Fax: (830) 379-3813

Thrift Shop: (830) 379-8300

Email:

silvercenter@sbcglobal.net

Website:

www.silvercenterseguin.com

President's Corner...

Hello everyone,

Well, June is here and that means the Taste of Seguin is upon us. Mark your calendars and get your tickets if you haven't already done so. They are \$20 if you are a member, and you can buy your ticket here at the Silver Center. If you are not a member, the tickets are \$25 before the event and \$30 at the door that evening. The big date is June 20 and doors open at 6:00, so be sure and help the Silver Center with your attendance. This is our biggest fundraiser of the year, and it involves the whole community and that begins with you. Enjoy a great evening of good food, music, socializing with friends, bidding on silent auction items, and just having a really good time. Come and bring a friend or two!

As I write this, we haven't had our first country show yet, but I'm sure it will be great. We are so thankful to have Gil Merkle as the new producer. He is working hard to round up talent for your listening pleasure. Remember that the Silver Opry is the 3rd Thursday of the month, June 15. We need your support to get it going and keep it going. Remember we had the first version of our country show for 12 years after it started in 2003. We'd love for this one to continue even longer.

I have a proposal for those of you who love to cook. We are thinking of having a bake sale one Saturday morning during the Farmers' Market. I know there are some really good cooks/bakers among our members, and we'd like to show off that talent and help out the Silver Center at the same time. If you are interested in contributing to the bake sale, please let Glenda know and we will set up a date.

Father's Day is June 18, so let's not forget to honor the men who are dads in any form. Their nurturing and mentoring is second in importance in the life of a child only to that of mothers.

Since hot weather is here, stay cool and hydrated. We want everyone to stay healthy and happy.

Brenda Englemann
President

Hello From the Front Office!


Happy June! Can you believe we are halfway through the year already? I hope you all have some wonderful summer plans, whether it is sitting in the shade or planning some family time away! As usual, the Center will be here with fresh hot meals and game nights, and Lunch and Learn events. We hope to continue to see you coming in and enjoying spending time with us!

I am a perpetually optimistic person so I am breaking out something I hope you all find fun and the Center also finds beneficial! I am bringing in a WISHING WELL for our lobby! The wishing well will be used in 2 very different ways... First and foremost my first wish is for the Center to become more financially independent. Anyone inclined to help us out can toss a donation into the wishing well and our first achievable WISH will be to pay off the note we have outstanding on the dance floor! The second use of the wishing well is for YOU to make a wish! It can be a wish that is an idea we can try to use to bring a new activity to the center or it can be a prayer for something personal. We have wonderful people working for you here and your 'wishes' will be kept private... so if you'd like someone to pray for you, WE WILL DO THAT! If you'd like to recommend an event or activity we will try to do that! If you have a wish for a new meal or summer beverage (like cold lemonade) we will do that! Let's see what YOUR WISHES are!

I am so blessed to be here every day and getting to know you is a pleasure. I know we get busy in the offices, but please stop by and visit with us if you have an idea that you want to share. I had a very sweet lady say she would like to see a wine and cheese event they had years ago, brought back. I wasn't here for that before so please let me know if this is something you would enjoy! What time of day works for you? I also had someone say there used to be a wonderful bakery here. I can't promise that again, but what about having the opportunity to special order trays of cookies or cinnamon rolls or a quiche or a casserole? Let's think outside of the box and let me know what you want to see at YOUR Silver Center!

Thank you all for the opportunity to be here as part of your Silver Center family. May God Bless you and keep you happy and healthy!

Glenda Layton
Executive Director
830-303-6612



The Seguin Silver Needlers will meet on Monday, June 26 at 1:00 PM at the Silver Center. Please bring all items needed to cut out bags for the Advocacy Center and the Family Violence Center. For More information, please call Marie at 830-386-0962.

BUSINESS MEMBERS

The Silver Center is sincerely grateful for the support of our faithful Business Members.

DIAMOND MEMBERSHIP

Seguin Noon Lions

PLATINUM MEMBERSHIP

Edward Jones Investments
Guadalupe Regional Medical Center

GOLD MEMBERSHIP

Guadalupe Valley Nursing Center
RE/MAX Professional Realty
KWED
Texan Renew Hearing Center
Tres Hewell Mortuary

STANDARD MEMBERSHIP

Advanced Hearing Aid Center
First United Bank
Campbell Floors, LTD
Charles Villeneuve Insurance
First Commercial Bank
Guadalupe County Republican Women
Guadalupe County Humane Society
Minigrip LLC
Nesbit Living & Recovery Center
Pecan Country Chiropractic
Prosperity Design Solutions
Seguin Beauty School
Seguin Gazette-Enterprise
The Koehler Company
LBHS Alumni Association
Red Carpet Auto Sales
Pecan Country Chiropractic

The Silver Center Opry is BACK!!

The Silver Center Opry is scheduled for Thursday, June 15th. The doors, dining, and bar open at 6:00 PM and the Silver Opry Band will start the show off at 7:00 PM. Our featured entertainers for June are Buddy Roy, Priscilla Speed, and Rich Orr. This evening's headliner will be Mr. Clint Taft! Our wonderful SILVER OPRY house band features Lloyd Waxler on lead guitar, Vernon Doege on steel guitar, Gil Merkle on rhythm guitar, Norman Govett on bass, Fruit Balderas on drums, and Nancy Kotzur on fiddle. All talented entertainers for sure! Presale tickets are available now! Please join us for an entertaining evening of great country music, food, fellowship, fun, and dancing. It is going to be another fabulous Silver Opry night!



WORD SCRAMBLE ANSWERS

THUNDERSTORM
INDEPENDENCE DAY
JULY FOURTH
SUNSCREEN
FRISBEE
ROAD TRIP
PICNIC
POPSICLE



The Silver Center
Volunteers gave of
their time and talents a
total of 570 hours!

This Center is a busy
place with many activities and learning programs
offered to our community, but especially to our seniors
to make life easier. Thank you to all of these
exceptional people! "Volunteers do not have the time,
they just have the heart." Elizabeth Andrew

Do you have a friend or neighbor that would like to
come to the center and become a volunteer? We need
you! Please check your schedule and search your heart
and come out and make a difference in a senior's life!

Traditions™

A Safe-Haven for the Memory Impaired

Some things you may not know
about our memory care

- Separate hallways for men and women
- Outdoor patios for residents to spend time outdoors
- A wide variety of activities for residents to be social and involved

For more information please call
our Admissions Hotline at
(830)515-3083



Colonial Manor Care Center

821 US Highway 81 West
New Braunfels, TX 78130

Phone (830) 625-7526 Fax (830) 620-0921

360 S. Hwy. 123 Bypass
Seguin, Texas 78155
830•379•4299

1312 Common St., Ste. 402
New Braunfels, Texas 78130
830•625•2725

Dream On

MATTRESSES - WINDOW FASHIONS - BEDS

OPEN DAILY 10 - 6 • SUN 12 - 5

Fax: 830-379-2445



ADVANCED Hearing aid center

Amy Trost,
BC-HIS, ACA

Owner
Independent
Hearing Instrument
Specialist



NATIONAL BOARD FOR
CERTIFICATION IN HEARING
INSTRUMENT SCIENCES

Comprehensive Hearing Evaluations
Digital Technology • Repair & Service of Most Brands
Hearing Aid Batteries • Swim Plugs • Earmolds
Assistive Listening Devices

30-Day Trial Period • Financing Available
Medicaid & Most Major Insurances Accepted

122 S. Moss ~ Seguin, Texas 78155

"Across from Guadalupe Regional Medical Center Entrance"

*"to help you hear
better we listen
with our heart..."*

830-372-2237

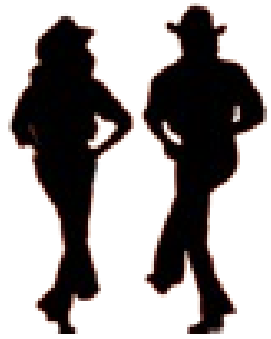
830-372-2380 fax

Our Friday Night Dances are really a lot of fun and a wonderful opportunity to mingle with friends and dance the night away. The bands are top notch, so if you don't care to dance, just come to listen to the music!

PLEASE NOTE: The doors no longer open at 6:00 pm...they open at **6:30 pm**.

2017 Silver Center Friday Night Dance Schedule

Doors open at 6:30pm Dance 7:30 – 11:00 pm



Jun 2 Two Way Street
 9 The Countrymen
 16 Glen Collins & The Alibis
 23 Most Wanted Band
 30 Wrangler Country

Oct 6 Most Wanted Band
 13 The Countrymen
 20 Glen Collins & The Alibis
 27 Wrangler Country

Jul 7 Vernon & Friends
 14 Texas Top Hands
 21 Charles & The Fabulous 4
 28 Bob Appel

Nov 3 Two Way Street
 10 Most Wanted Band
 17 Charles & The Fabulous 4
 24 Bob Appel

Aug 4 Two Way Street
 11 The Countrymen
 18 Glen Collins & The Alibis
 25 Most Wanted Band

Dec 1 Wrangler Country
 8 The Countrymen
 15 Bob Appel
 22 Glen Collins & The Alibis
 29 No Dance
 31 Two Way Street

Sept 1 Wrangler Country
 8 Texas Top Hands
 15 Charles & The Fabulous 4
 22 Bob Appel
 29 Vernon & Friends

Word Scramble

MUNSRTRHETOD

CIDNPENEENDE YDA

YUJL RFUHOT

ERNSUNSCE

BFSEIRE

DRAO PRTI

CICPNI

SCELPIOP

Birthdays of the Month

Sergei Ceyanes	6/1
Joyce Pierce	6/2
Shirley Puhlmann	6/4
Tuddy Dietz	6/6
Myrtle Huebinger	6/7
Gary Kolb	6/8
Judy Griffin	6/9
Dolores Pierce	6/11
Dennis McIntosh	6/12
Ann Monk	6/14
Debra Crow	6/15
Donna King	6/16
Treva Hicks	6/19
Joseph Cole	6/20
Shirley Myers	6/20
Willo Mae Richter	6/20
Kenneth Stevens	6/22
Dee Griffin	6/24
Bobby Pees	6/25
Georgia Barber	6/27
Doan Van Tran	6/27
Elena Hyatt	6/28
Glenna McKandles	6/28
Grace Zimmerman	6/29

STAY ACTIVE WITH TAI CHI

Many older adults are looking for a gentle, low-impact exercise program that helps them stay active and improves muscle strength, flexibility and balance. TAI CHI fits the bill!

The benefits include, but are not limited to, helping with arthritis pain, reducing blood pressure, reducing stress and depression, and helping reduce bone loss in menopausal women. Tai Chi is a phenomenal exercise, and it all started with the ancient Chinese!

Join us at the Silver Center on Mondays at 9:00 am. It is only \$1.00 per class. Hope to see you there.

BIRTHDAY BINGO

On Friday, June 2, 2017, starting at 1:00 PM you are invited to join us to celebrate our June birthdays with gifts, cake, and bingo! Heart to Heart Hospice and Guadalupe Valley Nursing Center are sponsoring this special event. We have a lot of fun, so join us for our June HAPPY BIRTHDAY CELEBRATION! All members are invited!



PLEASE NOTE: Birthday Bingo has changed from the last Friday of the month... to the first Friday!

THRIFT STORE HOURS!

The Thrift Store will be open on Monday and Friday ONLY from 9:00 am - 4:00 pm.

Stop by and see what we have to offer! We are accepting donations too!

WINDSOR NURSING AND REHABILITATION CENTER OF SEGUIN

Core Values
Communication
Service
Higher Standards
Growth
Fiscal Responsibility

Our 122-bed facility offers the *Very Best* in long-term care and is staffed by licensed registered nurses, licensed vocational nurses, certified medication aides, and certified nurses aides.



Medicare & Medicaid Certified
Personalized Therapy & Rehabilitation Services
Physical, Occupational, Speech & IV Therapies
Wound care • Tracheostomy Care
Wander Guard System • Individualized Dietary Plans
Laundry/Linen/Housekeeping Services
Beauty & Barber Shop Services
Religious Services • Interactive Activities
Transportation • Private & Semi-Private Rooms

830.379.7777 • Fax 830.372.1204
1219 Eastwood Drive • Seguin, Texas 78155
www.WNRCSeguin.com

MEMORIALS

In Memory of: Ron Marcotte

By: Mrs. Ron Marcotte

In Memory of: Al Schuerg

By: Marilyn and Ronnie Lange

Mrs. Myrtle Zipp

Albert and Carolyn Zipp

Douglas and Rita Zwicke

John and Birdie Grein

Myrtle Huebinger

Leelan Koehler and Dorothy

Janecka

In Memory of: Harriet Young

By: Myrtle Huebinger

In Memory of: Alleene Stephenson

By: Myrtle Huebinger

THM

Tres Hewell Mortuary, Inc.

Family Owned and Operated

Tres Hewell, President

P.O. Box 820

165 Tor Drive

Seguin, Texas 78156

Phone: (830) 549-5912

Fax: (830) 549-5918

Cell: (830) 660-5809

www.treshewell.com

The Republican Women will NOT meet in June and July.

TEEA is celebrating CHRISTMAS IN JULY on July 25, 2017. There will be craft making demonstrations from 2-4 PM and again from 6-8 PM at the Agri-Life Building at 210 E. Live Oak, Seguin.



Memorial in Honor of:

Send Acknowledgement to:

Name: _____

Address _____

City _____

State/Zip _____

Memorial from:

Name: _____

Address: _____

City: _____

State/Zip: _____

*Thank you for the remembrance.
The Silver Center
510 E. Court
Seguin, Texas 78155*



Are you looking for a hot, fresh, well-balanced meal? The Silver Center serves a delicious lunch from 11 am to 1 pm

Monday through Friday, and the prices are great! Everyday something new is served such as Chicken Enchiladas, Meatloaf, Fish and Shrimp, and Salisbury Steak. With the entree you get two sides, a salad, roll, dessert and brewed tea or coffee. You can't beat that! Sandwiches, soups, and lunch salads are also offered. Join us at the Silver Center for a yummy lunch and some great fellowship!





- Large Apartments/3 floor plans to choose from
- Selective menu at all meals
- Daily Activities
- Loving Competent Care
- Family Owned and Operated

www.SeguinAssistedLiving.com

226 Preston Dr., Seguin, Texas 78155

Call Karen Taylor or Lindsey Taylor to schedule your tour today!

(830) 379-8882

License #050604



"Look to Seguin Assisted Living for a Carefree Future"



Remarkable²
HEALTHCARE®
— SEGUIN —

Resort Style Living in a Skilled
Nursing and Rehab facility.

**We are the ONLY
4-Star Rated facility
In Seguin by
Center for Medicare Services!
Come and see why!**

1339 Eastwood Drive
Seguin, TX 78155
830-379-3900

www.remarkablehealthcare.net

Beth's Coffee Haus Offers
Complimentary Coffee & Snacks



Spa's Feature Heated
Towels & Robes

JUNE 2017

* Open to the Public

Sunday	Monday	Tuesday	Wednesday	Thursday	Friday	Saturday
THIS MONTH'S LUNCH & LEARNS June 8: "Golden Outlook of Medicare" sponsored by Heart to Heart Hospice and GVNC June 13: "Advanced Directives and Naming Beneficiaries: Why is this so Vitally Important?" sponsored by Harbor Hospice June 15: "Vitamin Explosion" sponsored by Hope Hospice and Remarkable Healthcare						
4 9:00 Spirit of Joy Lutheran Church	5 9:00 Tai Chi* 11:00 Bunco 11:00 - 1:00 Lunch* Edward Jones Meeting	6 11:00 - 1:00 Lunch* 12:00 SKAT	7 9:00 Painters 9:00 Bunco 10:00 Bridge 11:00 - 1:00 Lunch* 11:30 Kiwanis 12:00 - 1:00 Blood Pressure Check* 12:30 Mahjongg	8 9:00 Mahjongg 11:00 Thrivent 11:00 - 1:00 Lunch* 11:30 - 1:00 Lunch and Learn* 12:00 Noon Lions 12:30 Beginner's Mahjongg*	9 10:00 2 & 4 Bridge 11:00 - 1:00 Lunch* 1:00 Pinochle 6:30pm Dance to* THE COUNTRYMEN	10 8:00 Farmer's Market Private Party
11 9:00 Spirit of Joy Lutheran Church	12 9:00 Tai Chi* 11:00 - 1:00 Lunch* 5:30 Gideons	13 10:00 Bridge 11:00 - 1:00 Lunch* 11:30 - 1:00 Lunch and Learn* 12:00 SKAT 6:00 - 8:30 GAMES NIGHT	14 9:00 Painters 10:00 Bridge 11:00 - 1:00 Lunch* 11:30 Kiwanis 12:00 - 1:00 Blood Pressure Check* 12:30 Evelyn Bridge 12:30 Mahjongg	15 11:00 - 1:00 Lunch* 11:30 - 1:00 Lunch and Learn* 12:00 Noon Lions 12:30 Beginner's Mahjongg* 6:00 - 9:30 THE SILVER OPRY*	16 11:00 - 1:00 Lunch* 1:00 Pinochle 6:30pm Dance to* GLEN COLLINS & THE ALIBIS	17 8:00 Farmer's Market
				1 11:00 - 1:00 Lunch* 12:30 Beginner's Mahjongg* Seguin Citizens Police Academy Awards Banquet	2 11:00 - 1:00 Lunch* 1:00 Pinochle 1:00 - 3:00 Birthday Bingo 6:30pm Dance to* TWO WAY STREET	3 8:00 Farmer's Market

18 9:00 Spirit of Joy Lutheran Church	19 9:00 Tai Chi* 10:00 Bridge 11:00 - 1:00 Lunch* 1:00 Friends Bunco	20 11:00 - 1:00 Lunch* 12:00 SKAT 6:30 Garden Club <div style="border: 1px dashed black; padding: 5px; text-align: center;">TASTE OF SEGUIN*</div>	21 9:00 Painters 10:00 Bridge 11:00 - 1:00 Lunch* 11:30 Kiwanis 12:00 - 1:00 Blood Pressure Check* 12:30 Mahjongg	22 9:00 Mahjongg 11:00 - 1:00 Lunch* 12:30 Beginner's Mahjongg* Noon Lions Officer Installation	23 10:00 2 & 4 Bridge 11:00 - 1:00 Lunch* 1:00 Pinochle 6:30pm Dance to* MOST WANTED BAND	24 8:00 Farmer's Market Private Party
25 9:00 Spirit of Joy Lutheran Church	26 9:00 Tai Chi* 9:00 EB Cards 11:00 - 1:00 Lunch 1:00 Silver Needlers	27 10:00 Bridge 11:00 - 1:00 Lunch* 12:00 SKAT 5:00 SC Board Mtg.	28 9:00 Painters 10:00 Bridge 11:00 - 1:00 Lunch* 11:30 Kiwanis 12:00 - 1:00 Blood Pressure Check* 12:30 Evelyn Bridge 12:30 Mahjongg	29 11:00 - 1:00 Lunch* 12:00 Noon Lions 12:30 Beginner's Mahjongg*	30 11:00 - 1:00 Lunch* 1:00 Pinochle 6:30pm Dance to* WRANGLER COUNTRY	31 8:00 Farmer's Market

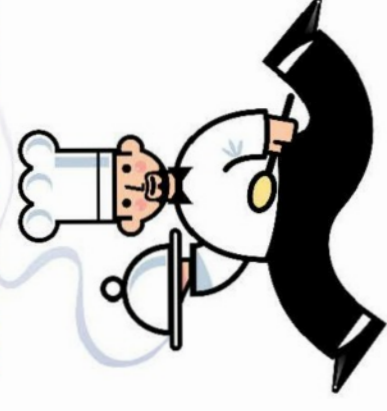
MEMBERS

Buy your discounted

Taste of Seguin tickets

TODAY

TASTE of SEGUIN



June Menu

Serving from 11:00 - 1:00

Entrees Served with 2 Sides, Salad, Roll, Dessert, Freshly Brewed Iced Tea or Coffee
\$6.50 for Silver Center Members ♦ \$7.00 for non-members

Monday	Tuesday	Wednesday	Thursday	Friday
			1 Beef Tips w/ Rice	2 Fish & Shrimp
5 Pork Chops	6 Spaghetti w/ Meatballs	7 King Ranch Chicken	8 Chicken Fried Steak	9 Fish & Shrimp
12 Stuffed Pasta Shells	13 Baked Chicken	14 Turkey & Dressing	15 Pulled Pork on a Bun	16 Fish & Shrimp
19 Beef Chalupa	20 Chicken Enchiladas	21 Meatloaf	22 Smothered Chicken	23 Fish & Shrimp
26 Chicken Alfredo	27 Chicken Parmesan	28 Chicken Strips	29 Salisbury Steak	30 Fish & Shrimp

The Silver Center serves made-to-order Sandwiches and Salads for \$7.25
Choice of chips or fruit, with freshly brewed iced tea or coffee

SANDWICHES

Classic Club
Ham and Cheese
Turkey and Bacon
Chicken or Tuna Salad
Pimento Cheese

Cup of Soup \$3.00
Bowl of Soup \$4.50

SALADS

Chef Salad
Chicken Salad Plate
Tuna Salad Plate
Grilled or Fried Chicken Salad

To-Go orders and Delivery in a limited area available for an additional charge.

A tray of sandwiches is great for office lunch meetings. Call for more information. 303-6612

24/7 AC Repair Services

IF YOU'RE OUT, WE'RE OUT!

- › Technicians You Can Trust in Your Home
- › Parts Stocked On Our Trucks
- › Quality You Can Depend On

gvechome
Your kind of power.™

AIR CONDITIONING & HEATING

SALES | INSTALLATION | 24/7 REPAIR

GVEC Home Services, Inc. is a subsidiary of **GuadalupeValleyElectricCooperative, Inc.**

800.328.0630 | www.gvecACservice.com



A Personal Invitation.

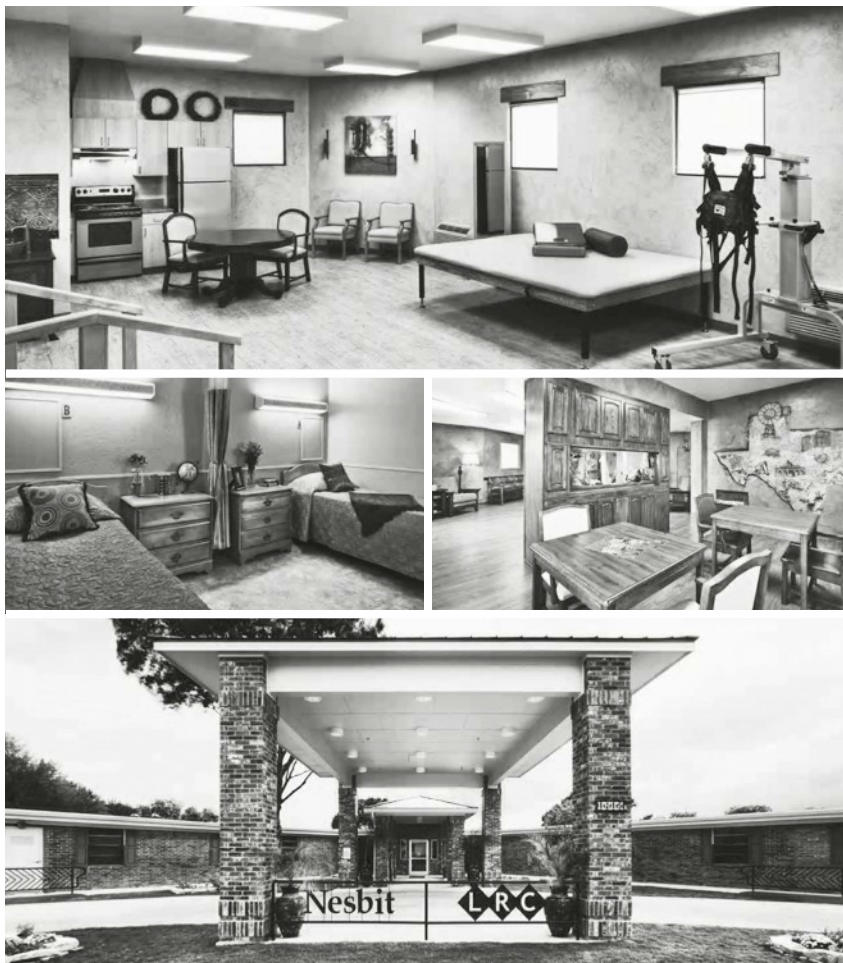
Nesbit LRC has been voted
"Best Nursing/Rehab Facility in Seguin"
four years in a row by the community in the
Seguin Gazette Enterprise poll.

Our newly remodeled facility, family owned
and operated since 1958, offers a wide array
of recovery and rehabilitation services.

When you can't live or recover in your own
home, we invite you to ours.

Nesbit LRC
Living & Recovery Center

1215 Ashby Street Seguin, TX 78155
(830) 379-1606 • www.nesbitlrc.com



Where there is LOVE,
there is LIFE!

 **CIMA**
CIMA HOSPICE
830.643.1971
www.cimahospice.com/central-texas

Your Hometown
Home Health



*Delivering outstanding
Nursing & Therapy services
throughout the Seguin area
since 1995.*

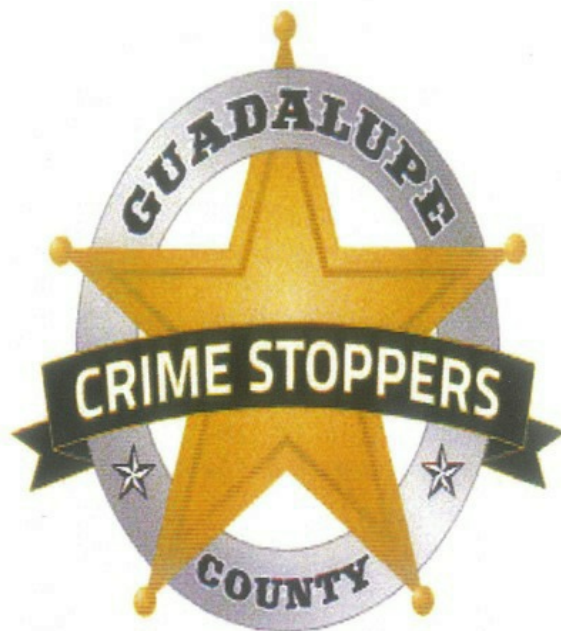
Registered Nurse Case Managers
evaluate your medical needs and
develop a "plan of care" (in coordination
with your physician and insurance) that
will include one of more of the following
services:

Nursing
Physical Therapy ~ Speech Therapy
Occupational Therapy

200 S. Austin
Seguin, Texas 78155
(830) 379-6171
(800) 288-3921

www.advancedhomehealthservices.com

Guadalupe County Crime Stoppers



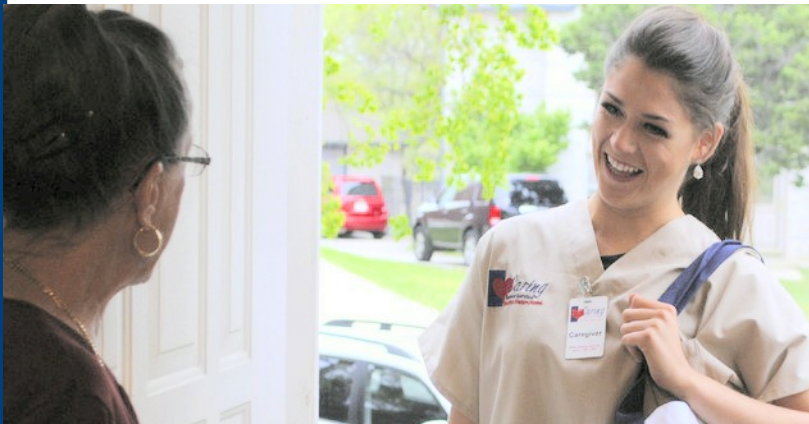
877.403.TIPS (8477)
www.gccsTIPS.org

Guadalupe County Crime Stoppers
P.O. Box 542
Seguin, TX 78156-0542



Senior Home Care
830.629.0509

Serving Comal, Guadalupe, & Hays counties.



We provide home care solutions to better meet the needs of our clients and bring positive changes to their lives.

Services

Personal Care Meal Preparation Transportation Housekeeping

Advantages

Same Day Service Caregiver Introduction 24 hour Availability All Inclusive Pricing

LUNCH & LEARN



Thursday, June 8, 2017

11:30-1:00

GVNC and Heart to Heart Hospice are sponsoring a discussion on "Golden Outlook of Medicare." Come to this presentation and learn what is new and what might help you with medical issues you might have. Call 830-303-6612 for reservations.

Tuesday, June 13, 2017

11:30-1:00

Harbor Hospice is sponsoring a presentation on "Advanced Directives and Naming Beneficiaries: Why is this so Vitally Important?" Don't wait until you are under pressure and you have to think about doing something quickly. Learn all you can now about this topic. Please call 830-303-6612 for reservations and a lunch.

Thursday, June 15, 2017

11:30-1:00

Hope Hospice and Remarkable Healthcare are sponsoring a presentation on "Vitamin Explosions." Learn all you can about the importance of vitamins, good ones, bad ones, and are they necessary as we go into our Golden Years. Call for reservations at 830-303-6612. Lunch is included.

FIND YOUR NAME

A member's scrambled name is in the newsletter each month. If it is your name, call the Silver Center at 303-6612 and receive a free coupon of your choice.

AALYDON WENAMN

A partnership for good health

WHY A GOOD RELATIONSHIP WITH A PRIMARY CARE PHYSICIAN IS A MUST

After years of specialized medical training, your doctor is an expert on the human body. He or she knows how it works, how to help keep it healthy, and how to treat it if something goes wrong.

But even with all that expertise, your doctor will have a hard time treating you without knowing the details of your unique medical situation. That's why it's so important for you and your doctor to have a strong working relationship based on open communication.

Your primary care doctor

The main doctor-patient relationship for most people involves a primary care physician. Among other things, these doctors:

- Diagnose medical problems
- Treat a variety of illnesses and conditions
- Coordinate healthcare with other medical professionals, if needed
- Help patients learn how to care for their own needs
- Help prevent health problems from occurring in the first place

Types of primary care doctors

- Family physicians, who are trained to care for people of all ages—from babies to older adults
- Internists, or internal medicine physicians, who focus on the medical conditions faced by adult patients
- Pediatricians, who work with newborns, infants, children, teens and even young adults

Do your part

No matter what type of doctor you decide is best for you, you're likely to be more satisfied with your treatment if you take an active role in your healthcare. For example:

Be prepared. Before your next doctor's appointment, take a little time to get ready.

Gather up your medications—including any over-the-counter drugs or herbal or alternative remedies that you take—and bring them with you to the doctor's office. Be ready to tell your doctor if you are allergic to any medications. Also, before your visit, consider writing down any questions you want your doctor to answer. You'll be less likely to forget something. Put the most important questions first, so you'll be sure to ask them before the visit ends.

Speak up. During your visit, tell your doctor about your symptoms and anything else you think he or she needs to know. For instance, be sure to mention when your symptoms started, how often they occur and how long they last.

Be honest. Answer all your doctor's questions, even the ones that might seem a little embarrassing. Remember, with few exceptions, everything you talk about with your doctor is confidential.

Listen carefully, and ask questions. Pay attention when your doctor speaks. It can be a good idea to repeat what he or she says in your own words so you're sure you understand. If you're confused, don't hesitate to ask questions. If your doctor recommends medication, ask how to take it and about possible side effects. If he or she suggests surgery, be sure you understand why you need it and the risks and benefits. If you have a condition that has a number of treatment options, ask about the pros and cons of each one.

Looking for a physician? Call the GRMC Physician Referral Line at 830.401.7401

Sources: Agency for Healthcare Research and Quality; American Academy of Family Physicians



We'd like to welcome you to our family. WellMed accepts patients with Medicare and select Medicare Advantage Plans.

WellMed at Seguin
1483 E Court St
Seguin, TX 78155
830-560-2813

WellMedHealthcare.com



Live Well. Live WellMed.

This is an advertisement. *Plans vary by location and county.
Family_AD TJ012114

Visiting Angels



- Senior Homecare
- Respite Care
- 1-24 hour care
- Free Home Consultation
- Transportation
- Meal Preparation
- Medication Reminders
- Light Housekeeping
- Bathing/Dressing
- No contract/Deposit

Call Today: 830-625-5414



Overnight Banana Oatmeal

Prep Time: 10 minutes plus refrigeration

Makes 4 servings

(Use medium mason jars with lids for this recipe.)

1 pkg. (3.4 oz.) Jell-O Simply Good Banana Flavor Instant Pudding

2 1/2 cups cold milk

1 cup old-fashioned or quick-cooking oats

1 cup plain nonfat Greek-style yogurt

1 banana, sliced

1/2 cup sliced almonds, divided

Beat pudding mix and milk in medium airtight container with a whisk for 2 minutes.

Stir in oats, yogurt, and bananas: cover with lid. Refrigerate overnight

Stir half the nuts into oat mixture, then serve topped with remaining nuts.

The children are home for the summer and may be spending the night with grandparents.

You can throw this together the night before and serve for breakfast the next morning.

Easy and no clean up!



The Silver Center is working with Collette Tours for some fantastic trips in 2017!

There is still time to book for following two tours: The Best of Eastern Canada and the Colors of England. Please call Glenda or Tammy at 830-303-6612 for more information on these two tours or come by the center. There is a flyer that talks about these tours.



Do you ask people to repeat?

Do you miss out on the punchline of jokes?

Does your family complain the TV is too loud?

Do you answer yes without knowing the question?

Do you need to see someone's face to hear them?

If your answer is yes to 2 or more questions, call today to schedule a FREE hearing screening!

Your Hearing Health is Important!



We service all makes and models of hearing devices!

(830) 399-4195

**628 N. Hwy 123 Bypass, Ste. 2
Seguin, Texas 78155**

www.texanhearingcenter.com

When it comes to your to-do list, put your future first. To find out how to get your financial goals on track, contact your Edward Jones financial advisor.



Kathy Nossaman
Financial Advisor

116 S. Moss St.
Seguin, TX 78155
830-379-8534



Warren Nossaman
Financial Advisor

809 E. Court St. Ste. 100
Seguin, TX 78155
830-379-9387



Doug Martin
Financial Advisor

507 E. Court St.
Seguin, TX 78155
830-379-0154



Steve Alyea
Financial Advisor

112 N. Camp St.
Seguin, TX 78155
830-372-9059



Kristy Kirkland
Financial Advisor

109 S. River, Ste. 102
Seguin, TX 78155
830-379-0817



Sebie Kirkland
Financial Advisor

116 S. Moss St.
Seguin, TX 78155
830-379-8534

Edward Jones

MAKING SENSE OF INVESTING

www.edwardjones.com

Member SIPC

*"When you can't be at home,
Come to our Hacienda!"*



*1637 N. King
Seguin, TX 78155*



*"We would like to thank all the
First Responders for attending the
luncheon, you are all appreciated."*



Accepting Medicare, Medicaid, VA and
other insurances.

For questions or inquiries contact
Wendy Moore,
830-865-0223 • Fax: 830-303-7153



*Our care makes the difference.
Our heart makes it home*

- * Skilled Nursing Care
- * Physical, Occupational & Speech Therapies
- * Rehabilitation available up to 6 days a week
- * Stroke Rehabilitation
- * Complex wound care
- * Tracheostomy care
- * E-stim, Vital-stim & Ultrasound
- * Wii-abilitation
- * Delicious meals

**THE HEIGHTS
OF GONZALES**

701 North Sarah DeWitt
Gonzales, Texas 78629
Phone: 830-672-4530
Fax: 830-672-4543
www.TheHeights

**COUNTRY CARE MANOR
REHABILITATION & LONG TERM CARE**

2736 fm 775
Lavernia, Texas 78121
Phone: 830-779-2355
Fax: 830-779-5503
www.CountryCare.com

Su Casa Cafe

Tex-Mex Cuisine

Great food! Great environment!

Special every day 11:00 to 3:00

**Come see us and enjoy
good free chips and salsa!**

**1142 E. Kingsbury St., Seguin, TX
830-379-2161**

**6:30 AM to 3:00 PM
Fridays 6:30 AM to 9:00 PM**



The TASTE OF SEGUIN

*is our largest Fund Raiser each and every year. This year
this outstanding event will be held on*

June 20th

at the

Seguin Event Center.

Fabulous food

*live music by: **Vernon & Friends***

Featuring Clifton Jansky

a huge Silent Auction

*wonderful beverages will be there for all that attend to
enjoy!*



WE CERTAINLY HOPE YOU CAN PENCIL

US IN ON YOUR CALENDAR!

A Taste of Seguin 2017

Tuesday, June 20th at the Seguin Coliseum

To be listed in directory of vendors:

Name of Business _____

Business Address _____

Business Phone# _____

Email – Website _____

List dishes to enter in up to TWO categories. (If preparing 2 dishes, they must be different categories. For example: 1 appetizer and 1 dessert. Not 2 desserts.)

SOUP OR SALAD _____

APPETIZER _____

ENTRÉE _____

DESSERT _____

SIDE DISH _____

CHIPS and SALSA _____

For our use only:

Contact Name: _____

Contact Phone #: _____

Email: _____

Return to: The Silver Center

510 East Court Street, Seguin, TX 78155

Fax (830) 379-3813 Phone (830) 303-6612

Questions: Kay Lynn Hawkins, Event Chair

klynn_h@yahoo.com or (512) 749-7950

With your help, we're making a difference today in the life of a Senior.



Taste of Seguin

The Silver Center

510 East Court St.

Seguin, TX 78155

It's that time of year again – The Taste of Seguin is just around the corner. Along with this letter you will find this year's entry form. The categories are the same as last year and some new ones have been added. – APPETIZER, SOUP OR SALAD, ENTRÉE, DESSERT, SIDE DISH, and CHIPS & SALSA.

All forms are due by 3 p.m., on Tuesday, May 23.

Two Vendor Meetings are set for your convenience:

Tuesday, May 23 at 3 p.m. or Tuesday, June 6 at 3 p.m. at The Silver Center

Please provide **SAMPLE SIZED PORTIONS**. This allows attendees to visit every food booth and not get filled up by just a few. The idea is to get attendees to visit every booth, so please aide in this effort by offering small samples.

This year's event will include big door prizes, a dance band and more. The Taste of Seguin committee is brainstorming to add new and exciting elements to this important fundraising event.

You may fax your completed form to (830) 379-3813, drop it by the Center or email to silvercenter@sbcglobal.net.

If you have any questions, please email me at klynn_h@yahoo.com or call my mobile at 512-749-7950.

Sincerely,

Kay Lynn Hawkins

Taste of Seguin Chair

Silver Center Board Member

TASTE of SEGUIN

Auction and Door Prize Donation

**The 10th Annual TASTE OF SEGUIN is set for
Tuesday, June 20, 6:00 - 8:30 p.m.
at the Seguin Coliseum
benefiting
The Silver Center
The Seguin-Guadalupe County Senior Center**



Enjoy samples from area restaurants, caterers and food preparers.

Vote on the Best Appetizer, Entrée, Salad and Dessert.

Thank you for your donation of _____

Fair Market Value \$ _____

Donor Name _____

Address _____ email _____

Contact person _____ Phone # _____

The Silver Center
510 East Court, Seguin, TX 78155
Email: silvercenter@sbcglobal.net
830.303.6612

One copy for Donor
One copy for Silver Center

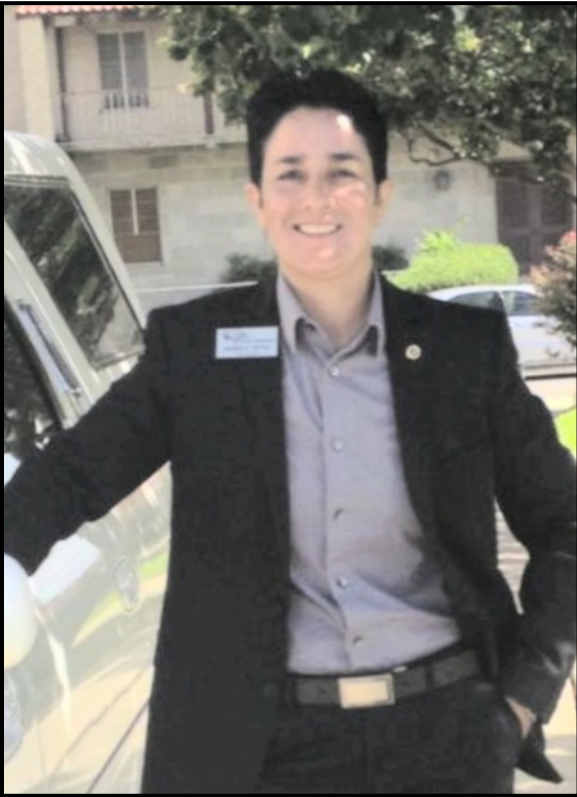
Donation acquired by

volunteer name

The Silver Center is a 501(c)3 nonprofit organization.

We are grateful for your support of this worthy cause.

Goetz Funeral Home Guadalupe Valley Memorial Park



Public Open Forum on Death Related Topics:

It's difficult to talk about death or dying, but we all will need to do it at some point in our lives. We need to feel the freedom to talk to others about our questions, our concerns, our experiences, and learn from each other.

Question of the Month:

Is embalming required by law in the state of Texas?

Answer:

No, embalming is not required by law in the state of Texas; although it may be suggested depending on the type of funeral service you select. If a family selects funeral services such as, Direct Cremation or Immediate Burial, it does not require embalming.

We encourage you to ask us those questions that may be weighing over your heads; and you may submit your questions to the following:

Marina P. Reyna
Funeral Director/Embalmer ~ Goetz Funeral Home
marina.reyna@dignitymemorial.com
713 N. Austin Street -Seguin, Texas 78155
(830) 379-2313



GAMES AND FUN!

Sounds like a great night out for family and friends, doesn't it? On every 2nd Tuesday, The Silver Center is having a **GROUP GAME NIGHT**. Doors open at 6 pm and close at 8:30 pm. The cost: \$2.00 per person for members and \$2.50 per person for non-members.

Here are the Rules:

- 1) You must have a group. You cannot join a group when you get here.
- 2) When you call (830-303-6612) to reserve your space, give a head count of the people in your party so that a table can be set up for your group.
- 3) Call by Thursday, June 1st. ***Be sure to call the Thursday before game day to reserve your spot!***
- 4) Bring your own cards, game pieces, or whatever you need for your game.
- 5) Bunco, Bridge, Poker, Mahjongg, Pinochle, or any other game is okay by us.
- 6) Must clean your own area/space before you leave at 8:30 pm.

Sound like fun? Well it is, and it is also a wonderful time to play and relax with your family and friends. Please join us and don't forget to call for your reservation!

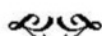
This Month's Donations

The Directors and Staff gratefully acknowledges the financial support of its donors:

Omer Barsness
Ken Hardcastle
Doug Hawkins
KayLynn Hawkins
Andrea King
Glenda Layton
Steve McDonald
Kathy Nossaman
Christy Ramos

**The Silver Center
gratefully
acknowledges the
ongoing support of
The United Way**

*Volunteers needed in multiple
positions. Please contact the
office if you are willing to help.*



WE HAVE A MORTGAGE

Building Mortgage \$151,129.45
Monthly Payment \$3,608.43

Sagebiel Hall Floor Loan
\$9,356.96

Monthly Payment \$154.47

The Silver Center would not exist without
the efforts of its awesome
2017 VOLUNTEERS 2017

Jan Almon	Joyce Kuykendall
Greg Ander	Glenda Layton
Carmen Astran	Evelyn Martin
Roy Balter	Glenna McKandles
Barbara Behal	Sandra Moline
Evelyn Bender	Grace Mugrage
Mary Ann Bienek	Yolanda Newman
Velma Buie	Kathy Nossaman
Susan Casto	Warren Nossaman
Tracie Claypool	Ruth Owens
Teresa Cohen	Dolores Pierce
Phil Cox	LaVerne Roskydal
Charles Crowley	Dr. D. Scaramozi
Nancy Cude	Joyce Scarlett
Patricia Custer	Bob Sebesta
Doreen Dunnihoo	Donnie Sharp
Brenda Engelmann	Mary Smith
Arnold Espitia	Sharon Steinberg
Sharon Frederickson	Holly Taylor
Laura Graham	Ann Theiss
Wendy Grant	Eric Threet
Laura Hamilton	Margo Trost
Gail Harshman	Viola Trost
Doug Hawkins	Clarence Urban
Kay Lynn Hawkins	Mary Ussery-
Ann Hodges	Wilson
Myrtle Huebinger	Margaret
Shirla Humiston	Wideman
Cynthia Hyatt	Art Woytek
Denise Kopecki	Mark Zoboroski



SEGUIN-GUADALUPE COUNTY
SENIOR CITIZENS' CENTER
510 E. COURT STREET
SEGUIN, TEXAS 78155

PRE-SORTED STANDARD
U.S. POSTAGE PAID
SEGUIN, TX
PERMIT NO. 23

JUNE 2017



From Tonsillitis To Arthritis

GRMC FAMILY PRACTICE PHYSICIANS—TAKING CARE OF ALL AGES.

Whether a patient is 8 months old or 80 years young, we are dedicated to their health and wellness. In a community like Seguin, we love getting to know our patient families. Using a family physician is not only convenient but also provides the physician an ongoing family medical history. Our entire team of family practice physicians is knowledgeable in a wide range of medical issues which enables us to care for patients at all stages of life, from infancy to adulthood and even seniors. Join our family and let us take care of you—for a long time to come.

Guadalupe Regional 
MEDICAL CENTER
Advanced Medicine. Personal Touch.

Find your Family Physician today: 830.401.7401
1215 E. Court St. • Seguin, TX 78155 • grmedcenter.com