

The Silver Showcase

Volume 1001 No.4

Email: silvercenter@sbcglobal.net • Website: www.silvercentersequin.com

April 2024

Board of Directors

President

Rosie Van Booven

Vice President:

Barbara Behal

Treasurer:

Gay Lynn Olsovsky

Secretary:

Syndee Bundick

Board Members

Lynnette Gray

Gary Kubenka

Norman Partain

Bingo Chair

Gay Lynn Olsovsky

SILVER CENTER STAFF

Executive Director

Glenda Partain

Book Keeper

Pat Weber

Cook

LuAnn Archibeque

Catering Staff

Herlinda Henderson

Shelly Lindsey

Kelly Perkins-Orozco

Janitor

Phone: (830) 303-6612

Fax: (830) 379-3813

Letter From the President:

Hello everyone!

I hope you are able to enjoy what Spring has blessed us with so far. The bluebonnets and other flowers have been really beautiful and all the trees are putting out their new leaves! We have been truly blessed with rain and fortunate to have bypassed any really bad weather so far!

I want to say a huge THANK YOU to everyone who has visited our Silver Center recently!! Our staff is being kept busy with such a variety of events. I truly appreciate that so many folks trust us with their special events. Please remember we have rooms of different sizes that you can rent and Louann can definitely take care of any catering needs you may have!

As I wrote here last month, our Board of Directors is continuing to work on new ideas. Watch the marquee and future newsletters for our events!

Remember that Tuesday through Friday we are serving home cooked meals from 11:00 to 1:00. They come with dessert and tea for \$12.00. And if you or someone you know, needs it delivered, call to set that up! You will not be disappointed!!

For those of you that have gardens, if you have an over abundance of vegetables and want to share, we would love whatever you have to offer!! And we can share with those that maybe are not able to get to a store to get fresh produce for themselves.

As always, don't hesitate to contact us if we can help you or If you have any ideas, questions or suggestions. Please stop by and visit with Glenda!

Thanks for your support!!

Rosie Van Booven



HELLO FROM THE FRONT DESK....

Wow! Some days are more frustrating than others aren't they. When I come in to get the newsletter sent to the printer AND THE COMPUTER won't open up... Whew! An 1 ½ hours later (and no telling what the cost) the IT man has it up and working! I don't wish computer problems on anyone!

APRIL FROM THE FRONT DESK

We had a great dance in March with Gordon Rockett... and this month we have **GABE GALVAN** here on 4/26 for your dancing & listening pleasure! Presale tickets are on sale now for \$10 (\$15 at the door on the 26th). We are looking at the numbers of folks attending our dances and setting up an extra dance on the 2nd Friday of some months. Keep an eye on our sign out front and on our website (www.silvercenterseguin.com) for updated dances!

WE WILL INCREASE DANCES AS LONG AS WE HAVE GOOD CROWDS.

It's great to see everyone out and having FUN!

April also has 2 family reunions, wedding showers, a volunteer luncheon, bunco parties, bridge, zontas meeting, lions meetings, and baby showers already on the books! Do you need somewhere to host a party? Don't forget this is a pretty, safe and clean venue to have your party!

Our Silver Center lunches on Tuesday, Wednesday, Thursday, & Friday are going well. Not as many dining in-house as there used to be... but at least we are helping more people at home that request meal deliveries! Please come out and see us!



Glenda Partain

BUSINESS MEMBERS

The Silver Center is sincerely grateful for the support of our faithful Business Members.

DIAMOND MEMBERS

*Gifted Heart Hospice
Sequin Noon Lions*

PLATINUM MEMBERS

Guadalupe Regional Medical Center
CMC Commercial Metal Company

GOLD MEMBERS

Advanced Home Health Services
First United Bank
Tres Hewell Mortuary
Excelin Health, LLC * Concentration

STANDARD MEMBERS

Emanuel's Lutheran Church
Guadalupe County Republican Women
Nesbit Living & Recovery Center
Sequin Gazette-Enterprise
Sunrise Lions Club
Guadalupe Humane Society
Gary Kubenka Painting
Mid Texas Symphony Guild
NOVA Access Flooring
Westerhom-Koehler Insurance

Party & Event Rental Supply

EST. 2022

CROWN

—EVENT RENTAL—

www.crowneventrental.com

830-832-7881

Jason@crowneventrental.com

Texan bees in the spring



SPRING WORD SCRAMBLE

LOSBMSOS	-----
ZEREBE	-----
GIPCRHNI	-----
FOLIDAFD	-----
OELSRWF	-----
UBSDGYAL	-----
LESPTA	-----
ADGERN	-----
BIBART	-----
CICPNI	-----

Please call Glenda Partain at (830) 303-6612 today to
volunteer a couple of hours of your time
around the Center.

VOLUNTEER - HOURS - MARCH
390 Hrs

THANK YOU to all of our VOLUNTEERS that helped us
serve our community and those who are helping us deliver
meals!

May God Bless all of our Board of Directors who volunteer
so much of their time to assist us with special events, dances,
and more!

CHARITABLE DONATIONS FOR MARCH
Line Dancers
New Quilting Group

Smile A While (BY Velma Buie)

Ten Reasons Eve was created:

1. God was worried Adam would frequently become lost in the garden.
2. Because he would not ask for directions.
3. God knew that that someday Adam would require someone to locate and hand him the remote.
4. GOD knew Adam would never never go out and buy himself a new fig leaf when his wore out.
5. therefore would need Eve to buy one for him.
6. God knew that Adam would never make a doctor's appointment for himself.
7. God knew Adam would never remember which night was garbage night.
8. God knew if the world was to be populated, men would never be able to handle the pain and discomfort of childbearing.
9. As the keeper of the garden, Adam would never remember where he left his tools.
10. Apparently Adam needed someone to blame his troubles on when God caught him hiding in the garden.

As the Bible says, "It is not good for man to be "alone!"

When God finished the creation of Adam, he stepped back, scratched his head, and said, "I can do better than that."

Mothers are like glue. Even when you can't see them, they are still holding the family together.

The Pastor came to visit the other day. He said that at my advanced age, I should be thinking of the hereafter. I told him, "oh I do it all the time." No matter where I am—in the living room, upstairs, in the kitchen, or down in the basement, I am asking myself, "Now, what am I here after"?

"Oh God, sighed the wife one morning, I'm convinced my mind is ALMOST COMPLETELY GONE!" Her husband looked up from the newspaper and commented, "I'm not surprized. You've been giving me a piece of it every day for 40 years!"

The Church service was under way and they passed the collection plate. When the Preacher saw a \$100 bill in the collection plate, he stopped the service and announced, "Whoever put the \$100 bill in the plate, please stand up. An attractive single woman stood up and said, "I did". The preacher told her, since you put that much money in the plate, I would let you pick out three hymns." Excitedly, the woman said, HOW NICE.... I'll take him, and him, and him!"

We all know mirrors don't lie----I'm just grateful that they don't laugh!

MY WISH FOR ALL: May you be blessed with 3 bones:

1. A WISHBONE for you to dream on, and make things happen!
2. A Backbone for courage and strength.
3. And a Funny Bone to laugh at life all the way through!

What do you call cheese that's not yours? NACHO CHEESE!

Golf is like taxes: you drive hard to get to the green, then end up in the hole!

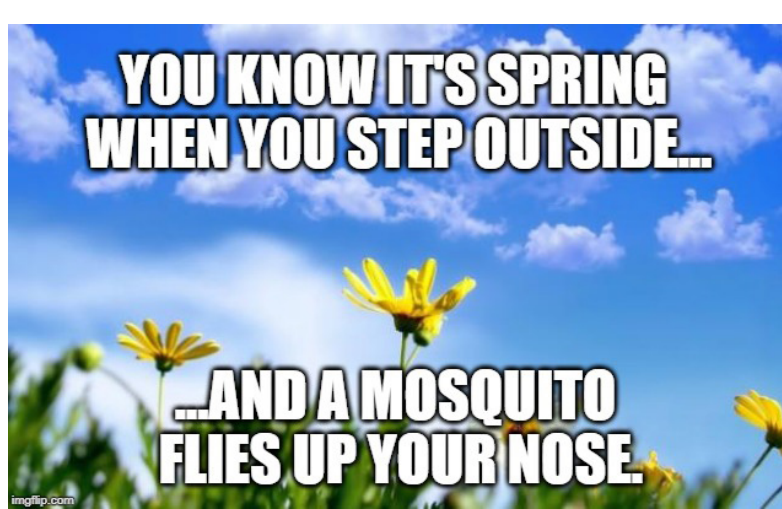


Birthdays of the Month

If you have an April birthday, and are not on our list, please call us so we can update our records! Please note we currently make **to-go** lunches, with **preorder** on Tuesday or Thursday!

APRIL BIRTHDAYS

Sheryl Greenwood	4/2
Babs McGuffin	4/6
Pat Weber	4/8
Mary Ann Bienek	4/11
Karen McMath	4/13
Ron Colunga	4/20
Mary Baldwin	4/24
Robert Calvert	4/27
Evangeline Clor	4/27
Rebecca Meckel	4/29



We ♥ Our



LuAnn Archibeque

Barbara Behal

Syndee Bundick

Velma Buie

“Buster” Cage

Mary Jane Cage

Jamie Evans

Brenda Englemann

Tom Franczak

Martha Greenlaw

Shirla Humiston

Bob Kellner

Gary Kubenka

Pierce Law

Glenda Partain

Sharee Layton

Karen McMath

Betsy Martin

Paul Martin

Evelyn Martin

Grace Mugrage

Gay Lynn Olsovsky

Norman Partain

Kelly Perkins-Orozco

Kay Stuart

Rosie Van Booven

Pat Weber

Yori Webb

GRIEF SUPPORT GROUP

Third TUESDAY OF THE MONTH FROM 4:00 – 5:00 PM

Silver Center in Seguin

510 East Court Street, Seguin

830-303-6612

Contact Tamara Berger at 512-557-7185 or

tberger@htohh.com

Heart to Heart Hospice Office at

512-667-6816

PROVIDED BY HEART TO HEART HOSPICE





*Our care makes the difference.
Our heart makes it home*

- * Skilled Nursing Care
- * Physical, Occupational & Speech Therapies
- * Rehabilitation available up to 6 days a week
- * Stroke Rehabilitation
- * Complex wound care
- * Tracheostomy care
- * E-stim, Vital-stim & Ultrasound
- * Wii-abilitation
- * Delicious meals

**THE HEIGHTS
OF GONZALES**

701 North Sarah DeWitt
Gonzales, Texas 78629
Phone: 830-672-4530
Fax: 830-672-4543
www.TheHeights.com

**COUNTRY CARE MANOR
REHABILITATION & LONG TERM CARE**

2736 fm 775
Lavernia, Texas 78121
Phone: 830-779-2355
Fax: 830-779-5503
www.CountryCare.com



**SERVING COMAL,
HAYS, GUADALUPE
AND WILSON
COUNTIES**

Mission Statement

The RSVP of South Central Texas has a dual purpose of engaging persons 55 and older in volunteer service to meet critical community needs and to provide a high quality experience that will enrich the lives of the volunteers.

Seguin Office

RSVP
1000 W. Court St.
Texas Lutheran University
Seguin, TX 78155

830-379-0300
bweyland.rsvp@tlu.edu

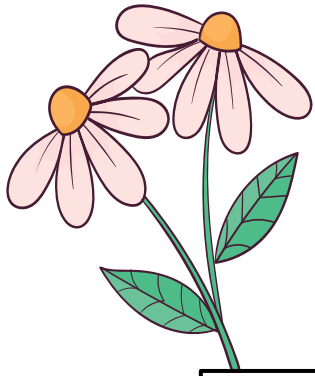


**LEAD.
INSPIRE.
CHANGE THE
WORLD
AGAIN.**

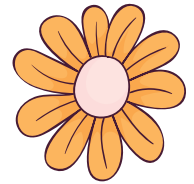
**Make a difference in
your community today.**

**South Central Texas
RSVP**

www.rsvptlu.org



Spring FLOWERS



Find the hidden words!

Tulip

Daisy

Daffodil

Sunflower

Rose

Dandelion

Lilac

Pansy

Iris

Violet

Poppy

Bluebell

Peony

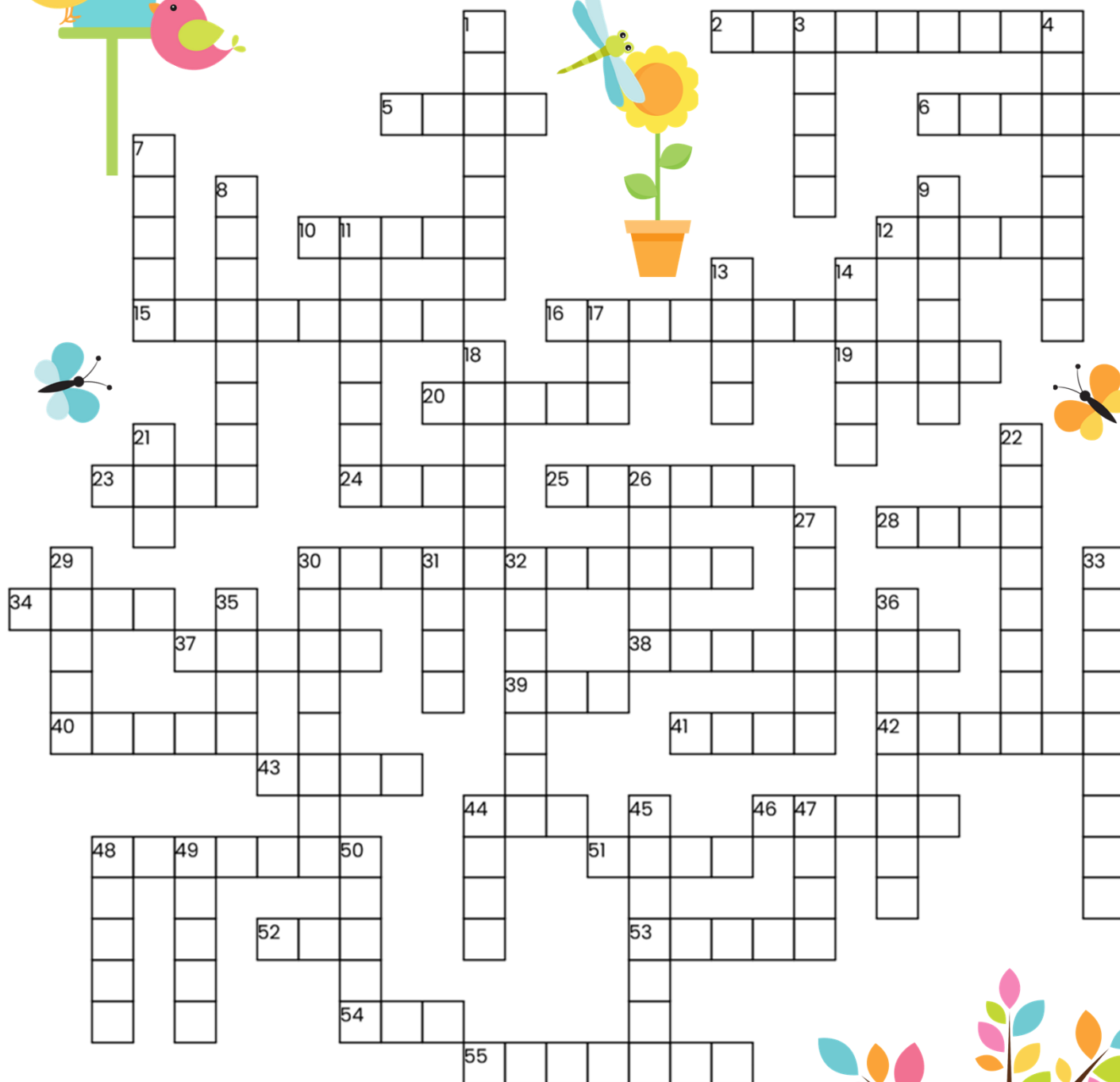
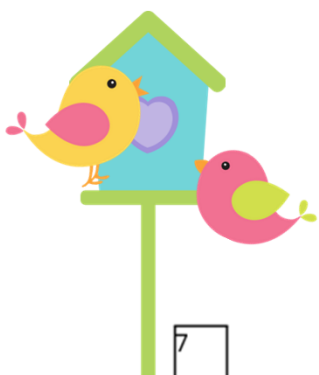
Snapdragon

Crocus

Marigold



Spring Crossword



ACROSS

- 2. Plant cultivation
- 5. Optimism
- 6. Syrup flavor
- 10. Verdant



DOWN

- 1. Young tree
- 3. Red breasted bird
- 4. Rain boots
- 7. Vocalize with song



- 12. Lion or lamb?
- 15. Light from the sun
- 16. Portable rain shelter
- 19. Large, single stem plant
- 20. ____ rabbit
- 23. Shelter for young
- 24. Movement of air
- 25. Outdoor meal
- 28. Flies in wind
- 30. Emerge from chrysalis
- 34. Comfortable outdoor temperature
- 37. Lawn
- 38. Soothing
- 39. Laid in clutch
- 40. Baby animals
- 41. Transition spring to summer
- 42. Young cat
- 43. ____ boots
- 44. Move through air
- 46. Preceding May
- 48. Bike
- 51. Young sheep
- 52. Breath of fresh ____
- 53. Young cat
- 54. Provides shade
- 55. Brief rain burst



- 8. Waterproof coat
- 9. Soft shade of color
- 11. Arcing light prism
- 13. Thaw
- 14. Emerge from egg
- 17. Fifth month
- 18. Collected rain water
- 21. Feeds on nectar
- 22. Happy satisfaction
- 26. Bird sound
- 27. Gentle wind
- 29. Feeling joyful
- 30. Ball game
- 31. Melt
- 32. Revitalization
- 33. Predictor of Spring
- 35. Jumping amphibian
- 36. Baby aquatic bird
- 44. Baby deer
- 45. Juvenile frog
- 47. Activity for enjoyment
- 48. Flower
- 49. Fledgling
- 50. Habitable planet





- Large Apartments/3 floor plans to choose from
- Selective menu at all meals
- Daily Activities
- Loving Competent Care
- Family Owned and Operated

www.SeguinAssistedLiving.com

226 Preston Dr., Seguin, Texas 78155

Call Karen Taylor or Lindsey Taylor to schedule your tour today!

(830) 379-8882

License #050604



"Look to Seguin Assisted Living for a Carefree Future"

**Where there is LOVE,
there is LIFE!**



CIMA HOSPICE

830.643.1971

www.cimahospice.com/central-texas



We'd like to welcome you to our family.
WellMed accepts patients with Medicare
and select Medicare Advantage Plans.

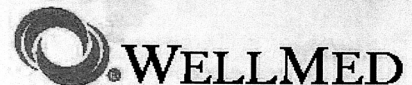
WellMed at Seguin

1483 E Court St

Seguin, TX 78155

830-560-2813

WellMedHealthcare.com

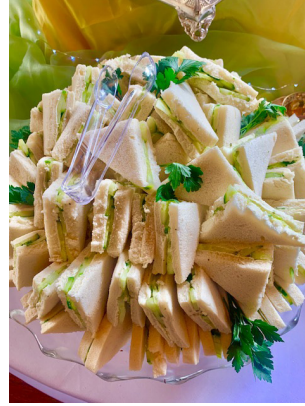


Live Well. Live WellMed.

This is an advertisement. *Plans vary by location and county.

Family_AD TJ012114

Catering by The Silver Center



LUNCH AND LEARN

APRIL 10 11AM – 1 PM (In the Yellow Rose Room)

Please join us for lunch *and* a presentation from one of the newest
Urgent Care Clinics in town.

WE ARE HERE FOR YOU! COME AND LEARN ABOUT US!



Accepting Medicare,
VA, Wellmed,
Humana & Most
Replacement Plans



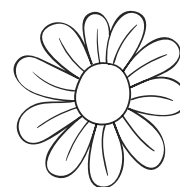
- Cold symptoms
- Cuts & Injuries
- Fractures
- Abscess
- Skin Infection
- UTI
- Dehydration
- Blood pressure & diabetes management and so much more !



Rapid Urgent Care
Open 7 days a week
(830) 469-3133



Spring FLOWERS



Word Search Solution

Tulip

Daisy

Daffodil

Sunflower

Rose

Dandelion

Lilac

Pansy

Iris

Violet

Poppy

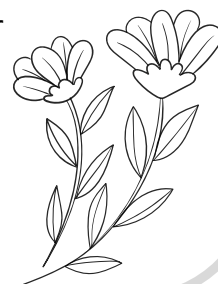
Bluebell

Peony

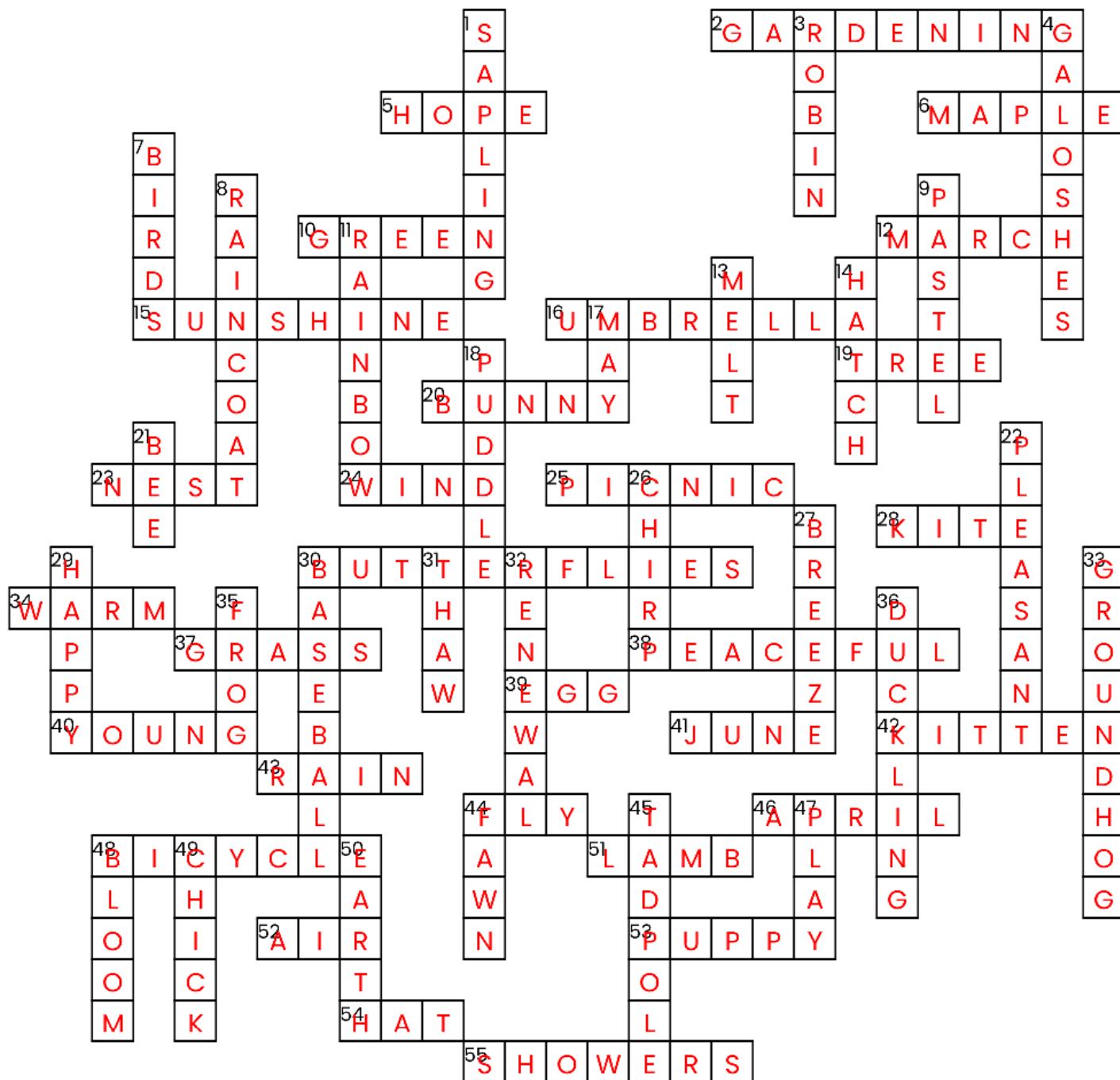
Snapdragon

Crocus

Marigold



Spring Crossword

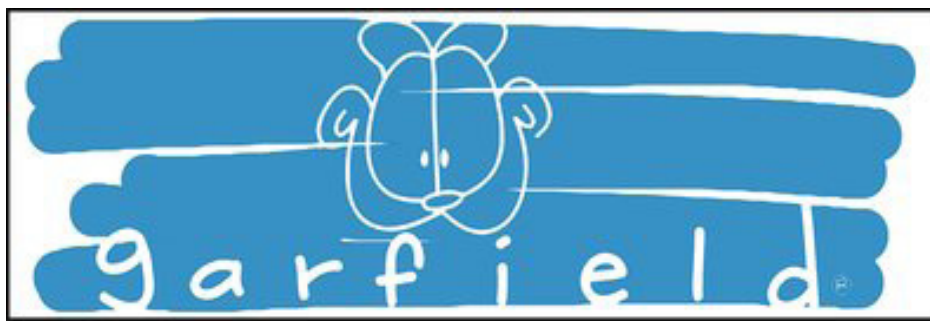


ACROSS

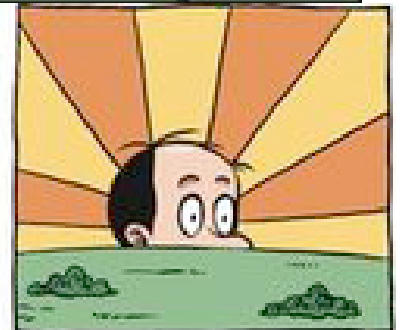
2. Plant cultivation
5. Optimism
6. Syrup flavor
10. Verdant

DOWN

1. Young tree
3. Red breasted bird
4. Rain boots
7. Vocalize with song



Adaptation



3-22



APRIL 2024						
	CLOSED MONDAYS	BRIDGE 4 SPRINGS HILL MEETING 7PM	BRIDGE 8 MAHJONGG	NOON LIONS	MAHJONGG LINE DANCERS	MASTER GARDENERS
			ZONTAS 12 to 1 RAPID CARE LUNCH N LEARN 11:30 MAHJONGG	SW Preparatory Father Daughter Dance 6 to 8 NOON LIONS TRES HEWELL LUNCHEON	WILCOX DECORATIONS MAHJONGG LINE DANCERS	WILCOX FAMILY REUNION TO 12AM 4
7	CLOSED MONDAYS	BUNCO BRIDGE 8	BRIDGE TEXERCISE MAHJONGG	BUNCO NOON LIONS GIFTED HEART HEALTH CLINIC NOON LIONS	MAHJONGG LINE DANCERS	WEDDING SHOWER ANNIVERSARY PARTY
14	CLOSED MONDAYS	BRIDGE 4 HEART TO HEART GRIEF SUPORT 4PM	BRIDGE TEXERCISE MAHJONGG			
		TEXERCISE ZONTAS LUNCHEON YELLOW ROSE MAHJONGG	MAHJONGG TEXERCISE LINE DANCERS GABE GALVAN DANCE !!!	BABY SHOWER YELLOW ROSE MASTER GARDENERS		
21	CLOSED MONDAYS	BRIDGE 8				
28	CLOSED MONDAYS	BRIDGE 4				



Seguin-Guadalupe County Senior Citizens Center
The Silver Center (a 501©3 Charity)

Membership Application

Business (or Your Name) _____

Primary Contact _____

Address _____

Phone _____ Fax _____

Email _____

Website Address _____

Annual Membership Levels

☐ **Standard PERSONAL Membership** \$ 40.00
((\$20 off a room rental))

☐ **Standard Business Membership** \$ 125
(listed in our business membership in the newsletter)

☐ **Gold Business Membership** \$ 250
(listed in our business membership & 1 month free ad in newsletter)

☐ **Platinum Business Membership** \$ 500
(listed in our membership & 2 months free ad in newsletter & 10% discount on a rental)

☐ **Diamond Business Membership** \$1,000
(listed in our membership & 1 year free ad in newsletter & 10% discount on a rental)

☐ Please invoice to the above address

☐ Make your check payable to "The Silver Center"

Are you interested in:

- ☐ Volunteer opportunities in exchange for business recognition.
- ☐ Providing a "Lunch and Learn" event for the community.
- ☐ Advertising in the center's monthly newsletter.
- ☐ Participation on the Board of Directors level for The Silver Center.

ADVANCED *Hearing* aid center



NATIONAL BOARD FOR
CERTIFICATION IN
HEARING
INSTRUMENT SCIENCES

Comprehensive Hearing Evaluations
Digital Technology•Repair & Service of Most Brands
Hearing Aid Batteries•Swim Plugs•Earbuds
Assistive Listening Devices

30-Day Trial Period

Financing Available

Medicaid & Most Major

Insurances Accepted

122 S.Moss ~Seguin, Texas 78155

"Across from Guadalupe Regional Medical Center"

Amy Trost,
BC-HIS, ACA
Owner
Independent
Hearing Instrument
Specialist

**"to help you hear
better we listen with
our heart..."**

830-372-2237

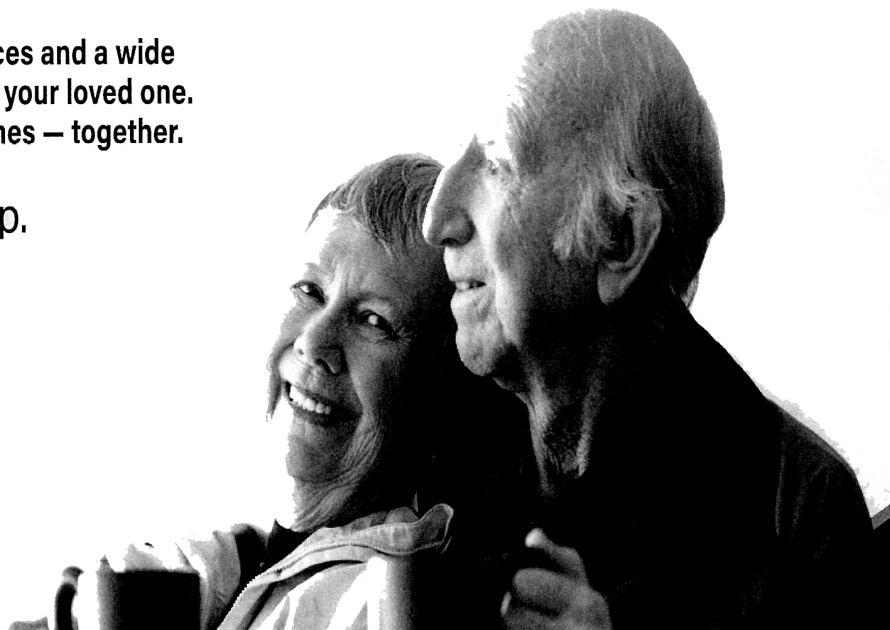
830-372-2380(fax)

SPRING WORD SCRAMBLE ANSWERS

**BLOSSOMS
BREEZE
CHIRPING
DAFFODIL
FLOWERS
LADYBUGS
PASTEL
GARDEN
RABBIT
PICNIC**

**Our staff offers unique funeral services and a wide
variety of memorial options for you or your loved one.
Call today to start planning your wishes — together.**

We're here to help.



Goetz

830-379-2313
713 N. Austin St.
Seguin, TX 78155
goetzfuneral.com


GUADALUPE VALLEY
MEMORIAL PARK

830-609-4906
2951 S. State Hwy 46
New Braunfels, TX 78130
guadalupevalleymemorialpark.com

In memory of Steve Tschoepe
Gay Lynn Olsovsky
Pat Weber

MEMORIALS

*** *Note that any memorials
received after we go to press will be in
the next month's newsletter.*

You will all be missed...



Memorial in Honor of:

Send Acknowledgement to

Name: _____

Address: _____

City: _____

State/Zip: _____

Memorial From: _____

Name: _____

Address: _____

City: _____

State/Zip: _____

Thank you for the remembrance

The Silver Center

510 E. Court • Seguin, Texas 78155

THM

Tres Hewell Mortuary, Inc.

Family Owned and Operated

Tres Hewell, President

P.O. Box 820
165 Tor Drive
Seguin, Texas 78156

Phone (830) 549-5912
Fax (830) 549-5918
Cell (830) 660-5809

www.treshewell.com

GIFTED HEARTS

Seguin, Texas

Hospice & Palliative Care



HOSPICE CARE

Hospice care focuses on those with life limiting illnesses. Hospice is a philosophy of caring that promotes quality of life by enhancing comfort for you and your loved ones—physically, emotionally, spiritually—with dignity as a fundamental goal of care.

PALLIATIVE CARE

Palliative care focuses on those with serious illnesses which may or may not be terminal. Palliative care provides comfort and symptom relief during the difficult seasons of infirmity.

OUR SERVICES:

- Routine Home Care
- Respite Care
- Continuous Crisis Care
- General Inpatient Care
- Palliative Care
- Physical Therapy
- Psychosocial Therapy
- Bereavement Counseling
- Social Services



GIFTED HEARTS

Hospice & Palliative Care

YOUR STRONG SUPPORT

CONTACT US

(830) 715.9299

www.giftedheartshospice.com

Calling all people who would like to help us as Volunteers!

We truly need someone to help us set up the announcement letters on the street
sign out front, assist us in setting up the rooms for scheduled events, tidy up
rooms after events, if you're certified we could use your help in the kitchen or bar
area, and on occasion we need help with news articles, &
folding the newsletter
so it can get to the post office on time. Are you looking
for a way to help?

(830) 303-6612

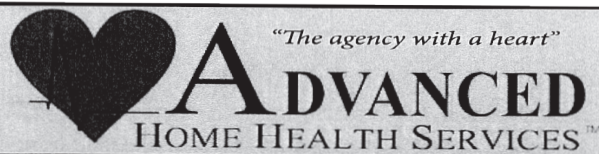
Please call
Glenda Partain
Tuesday – Friday after 2
to discuss the possibilities!

Guadalupe County Crime Stoppers



877.403.TIPS (8477)
www.gccsTIPS.org

Guadalupe County Crime Stoppers
P.O. Box 542
Seguin, Texas 78156-0542



1064 E. Ireland Seguin, Texas
830-379-6171 • 800-288-3921

Our Services Include:

Nursing • Physical Therapy • Home Health Aides
Speech Therapy Occupational Therapy

*Serving Guadalupe, Comal, Caldwell,
Hays, Gonzales, Wilson
and surrounding counties since 1995.*



Voted Best Home Healthcare
by Readers Choice 2018

SEGUIN-GUADALUPE COUNTY
SENIOR CITIZENS' CENTER
510 E. COURT STREET
SEGUIN, TEXAS 78155

U.S. POSTAGE PAID
NON-PROFIT
SEGUIN, TX
PERMIT NO. 23

April 2024

THE ANSWER IS YES

GRMC provides
quality rehabilitation
and treatment.

Guadalupe Regional
MEDICAL CENTER

Advanced Medicine. Personal Touch.

grmedcenter.com/yes

