

# The Silver Showcase

Volume 1002

No.5

Email: [silvercenter@sbcglobal.net](mailto:silvercenter@sbcglobal.net) • Website: [www.silvercenterseguin.com](http://www.silvercenterseguin.com)

May 2025

## Board of Directors

### President

*Rosie Van Booven*

### Vice President:

*Barbara Behal*

### Treasurer:

*Gay Lynn Olsovsky*

### Secretary:

*Syndee Bundick*

### Board Members

*Gary Kubenka*

*Norman Partain*

### Bingo Chair

*Gay Lynn Olsovsky*

## SILVER CENTER STAFF

### Executive Director

*Glenda Partain*

### Book Keeper

*Pat Weber*

### Cook

*LuAnn Archibeque*

### Catering Supervisor

*Brenda Aguilar*

### Catering Staff

*Wanda Rosales*

*Shelly Lindsey*

*Kelly Perkins-Orozco*

### Janitor

Phone: (830) 303-6612

Fax: (830) 379-3813

## Letter From the President:

**And just like that, another month has passed!!  
Happy May everyone!!**

I was hoping last month that we would be blessed with some rain, but unfortunately, that didn't really happen. Yes, we have received some moisture, but not as much as we need. The wildflowers tried to make an appearance, but they haven't been as full and beautiful as they usually are. Let's keep our fingers crossed and our hopes up that Mother Nature will give in and send some replenishing rain our way!!

Our May calendar is quickly filling up here at the Center. Even though many of the events are private, there are still others where anyone and everyone are welcome! Of course, we will have great dances this month with Wrangler Country and also the Gabe Galvan Band. And later in the month we will have two different Lunch and Learn events. Look for that information here in this newsletter.

May is known for a variety of celebrations and observances. I hope each of you can enjoy some of those. Please be safe and thanks again for supporting the Silver Center!! We hope to see you soon!!

**Rosie Van Booven**



## HELLO FROM THE FRONT DESK....

**MAY...** The month brings with it the impending end of another school year, year-end banquets, and graduation parties! We are thrilled to be able to make memories for our area citizens and their entire family! I have people ask me *"I don't know if I'm old enough to be a member of The Silver Center"....* YES, YOU ARE! **Our membership is open to people of ALL ages because it benefits the Guadalupe County Senior Citizens Center to have more members! (& we get no state or federal funding.)** We are a stand-alone 501c3 charity, that is very simply supported by the amount of business that we do and the donations we receive.

**MAY 3RD ...** we have elections in the Yellow Rose from 7am – 7pm. *If you live inside Guadalupe County you can vote here, or at any polling location near your home or business.*

**Every weekend** this month we are booked with anniversary parties, weddings, graduation parties, and church events. **During the week** we have a host of groups that use our rooms and hold their lunch time meetings. **If you want to join us for lunch give us a call! We can set you up here with a meal or with a to-go meal for you to grab it and GO!** Grocery prices have been so high that we had to go up on our lunch prices to continue to include a salad and a dessert. The meal is \$13 now (that is \$12 for your meal PLUS TAX to total up to \$13... *and yes we have to pay taxes on your lunch if you are not a tax exempt/civic organization.*) *We appreciate your understanding.*

**This month, due to some previously scheduled events, our dances are not on the 2nd + 4th Friday. As usual, pre-sale tickets are \$10 or it will cost \$15 for tickets purchased at the door.**

**MAY 16TH** WE WILL HAVE **WRANGLER COUNTRY** HERE FOR OUR FRIDAY NIGHT DANCE.

**MAY 30TH** WE WILL HAVE **GABE GALVAN BAND** HERE FOR OUR FRIDAY NIGHT DANCE.

**I hope to see you soon at the Silver Center...**



*Glenda Partain*

### **BUSINESS MEMBERS**

The Silver Center is sincerely grateful for the support of our faithful Business Members.

### **DIAMOND MEMBERS**

Guadalupe Regional Medical Center  
Seguin Noon Lions  
Gifted Heart Hospice

### **PLATINUM MEMBERS**

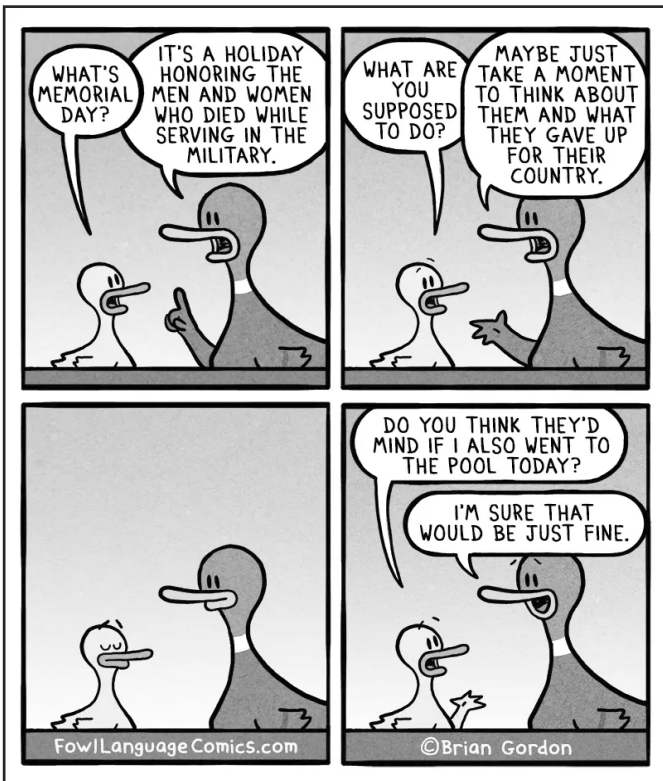
Tri-County A/C  
CMC Commercial Metal Company

### **GOLD MEMBERS**

First United Bank  
2-G Consulting LLC  
Kimberly A Illhardt CPA LLC  
Advanced Home Health Services  
Excelin Health, LLC \* Concentration

### **STANDARD MEMBERS**

GVEC  
Partners LLC  
Sunrise Lions Club  
Tres Hewell Mortuary  
NOVA Access Flooring  
Heart to Heart Hospice  
Gary Kubenka Painting  
Seguin Gazette-Enterprise  
Emanuel's Lutheran Church  
Guadalupe Humane Society  
Westerhom-Koehler Insurance  
Nesbit Living & Recovery Center  
Guadalupe County Republican Women  
Guadalupe County Conservative Republicans  
Seguin-Guadalupe County Heritage Museum  
Charles White DPM, FACFAS, - TX Foot & Ankle Surgical Assoc.



## Memorial Day Word Scramble

DNPNEEINECE \_ \_ \_ \_ \_  
 NICAERAM FGLA \_ \_ \_ \_ \_  
 AINSLONTIAT \_ \_ \_ \_ \_  
 OIRSCIUVOT \_ \_ \_ \_ \_  
 RITOAPCIT \_ \_ \_ \_ \_  
 ELRSOTEU \_ \_ \_ \_ \_  
 LEODRIS \_ \_ \_ \_ \_  
 LERSOTEU \_ \_ \_ \_ \_  
 EAEOINBRLTC \_ \_ \_ \_ \_  
 OOITVNDE \_ \_ \_ \_ \_

Please call Glenda Partain at(830) 303-6612 today to  
 volunteer a couple of hours of your time  
 around the Center.

VOLUNTEER - HOURS - APRIL  
 410 Hrs

THANK YOU to all of our VOLUNTEERS that helped us  
 serve our community and those who are helping us deliver  
 meals!

May God Bless all of our Board of Directors who volunteer  
 so much of their time to assist us with special events, dances,  
 and more!

CHARITABLE DONATIONS FOR APRIL

## Collaborated Jokes

Why did the picture go to jail? Because it was framed.

What do you call a sad cup of coffee? Depresso

I went to buy some camo pants but couldn't find them.

Knock. Knock. Who's there? Adore. Adore who? Adore is between us, so please open up.

How do you organize a space party? You planet.

How did the telephone propose to his girlfriend? He gave her a ring.

What do horse say when they fall down? I've fallen and I can't giddy up.

If a parsley gets sued, can they *garnish* his wages?

Knock. Knock. Who's there? Candice. Candice who? Candice this joke get any worse?

I couldn't figure out why the baseball kept getting larger. Then it hit me!

What runs but never goes anywhere? A refrigerator.

What do you call a beehive without an exit? Unbelievable.

What did the cucumber say to the pickle? You mean a great dill to me.

Why don't we see elephants hiding in trees? Because they're really good at it!!

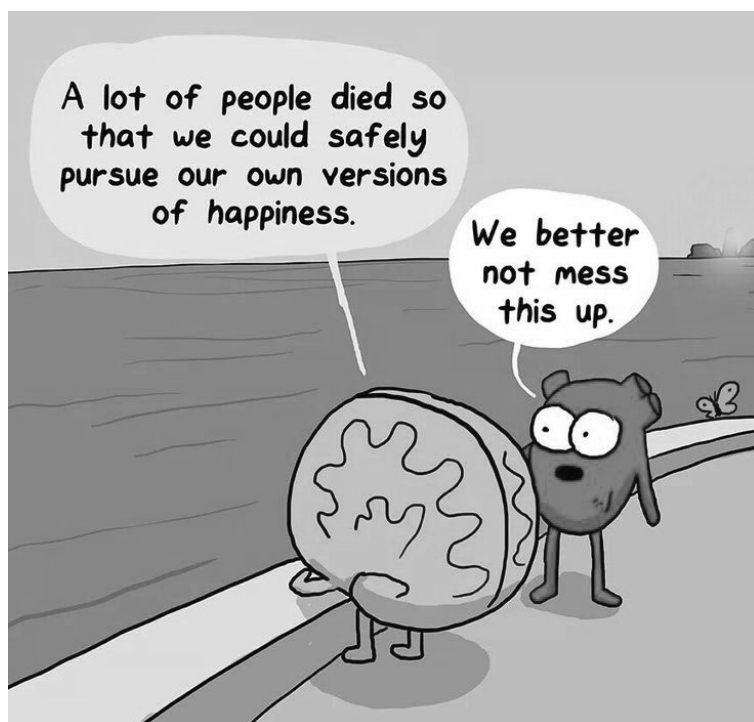
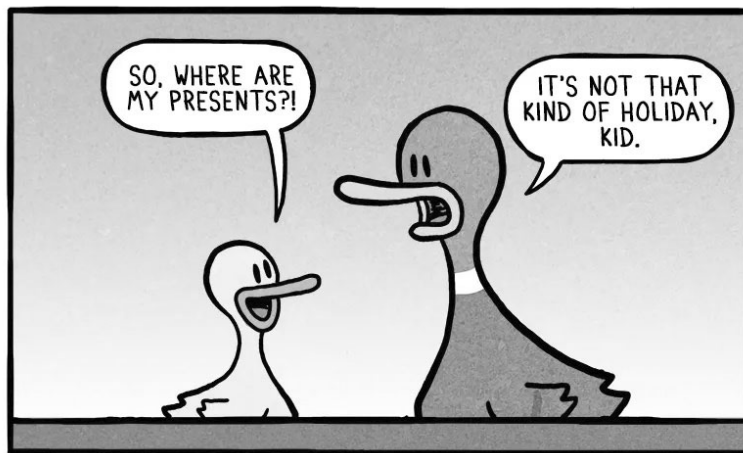
Vela Buie has retired and we want to say **Thank you** for all the years you have provided jokes for our Newsletter. We will do our best to follow in your footsteps!

# Birthdays of the Month

If you have a November birthday, and are not on our list, please call us so we can update our records! Please note we currently make **to-go** lunches, with **preorder** on Tuesday or Thursday!

## MAY BIRTHDAYS

Santa Smith	5/4
Betty Champion	5/7
Grace McFarland	5/7
Darvin Dieringer	5/8
Laura Kloiber	5/13
Sam Smith	5/16
Kay Stuart	5/21
Lee Wilson	5/22
Greg Griffin	5/25
Doris Rinn	5/27
Linda Dietz	5/28
Helen Ross	5/28
Nancy Berry	5/30



# We ♥ Our



LuAnn Archibeque

Barbara Behal

Syndee Bundick

Velma Buie

“Buster” Cage

Mary Jane Cage

Jamie Evans

Brenda Englemann

Anna Ezell

Dena Flanagan

Tom Franczak

Martha Greenlaw

Shirla Humiston

Bob Kellner

Gary Kubenka

Pierce Law

Glenda Partain

Casey Pruett

Sharee Layton

Karen McMath

Betsy Martin

Evelyn Martin

Gay Lynn Olsovsky

Norman Partain

Kelly Perkins-Orozco

Santa Smith

Kay Stuart

Rosie Van Booven

Pat Weber

Liz Witten

# Catering by The Silver Center



## PODIATRIST SEEING PATIENTS in *Seguin*



Charles White  
DPM, FACEAS

### Specializing in Care of the Foot & Ankle

- Diabetic Foot Care • Foot and Ankle Pain
- Primary Podiatry • Nail/Skin Care
- Wound Care • Dual Board Certified
- Sports Medicine



TEXAS FOOT & ANKLE  
SURGICAL ASSOCIATES, PLLC

Call now for an appointment!  
830-491-9211

- Prompt appointments available
- Also seeing patients in Keesley, LeVernia and Miami
- Most insurances accepted

932 South State Hwy. 123 Bypass • Seguin, TX 78155  
[www.southtxpodiatry.com](http://www.southtxpodiatry.com)



## **THE SILVER CENTER / CRYSTAL CHANDALIER BALLROOM**

***Fridays music starts @ 7:30PM. Doors open at 6:30PM. Call 830-303-6612 for \$10 pre-sale tickets. Tickets \$15 @ the door.***

### **2025 Dance schedule**

**Doors open at 6:30**

**Music Starts at 7:30**

**Kitchen open for dinner 6:30**



<b>April</b>	<b>11 <i>No Dance</i></b> <b>25 Gabe Galvan Band</b>
<b>May</b>	<b>16 Wrangler Country</b> <b>30 Gabe Galvan Band</b>
<b>June</b>	<b>13 Bimbo</b> <b>27 Gabe Galvan Band</b>
<b>July</b>	<b>11 Byron Zipp</b> <b>25 Gabe Galvan Band</b>
<b>August</b>	<b>8 Wrangler Country</b> <b>22 Gabe Galvan Band</b>
<b>September</b>	<b>12 Bimbo</b> <b>26 Gabe Galvan Band</b>
<b>October</b>	<b>10 The Merles</b> <b>24 Gabe Galvan Band</b>
<b>November</b>	<b>14 Wrangler Country</b> <b>28 <i>No Dance due to Holiday</i></b>
<b>December</b>	<b>12 Byron Zipp</b> <b>26 <i>No Dance due to Holiday</i></b>
<b>New Years I 31</b>	

**Please call (830)303-6612 your for pre-sale tickets  
Crystal Chandelier Ballroom 510 E Court St Seguin, TX**





*Our care makes the difference.  
Our heart makes it home*

- \* Skilled Nursing Care
- \* Physical, Occupational & Speech Therapies
- \* Rehabilitation available up to 6 days a week
- \* Stroke Rehabilitation
- \* Complex wound care
- \* Tracheostomy care
- \* E-stim, Vital-stim & Ultrasound
- \* Wii-abilitation
- \* Delicious meals

**THE HEIGHTS  
OF GONZALES**

701 North Sarah DeWitt  
Gonzales, Texas 78629  
Phone: 830-672-4530  
Fax: 830-672-4543  
[www.TheHeights](http://www.TheHeights)

**COUNTRY CARE MANOR  
REHABILITATION & LONG TERM CARE**

2736 fm 775  
Lavernia, Texas 78121  
Phone: 830-779-2355  
Fax: 830-779-5503  
[www.CountryCare.com](http://www.CountryCare.com)



**SERVING COMAL,  
HAYS, GUADALUPE  
AND WILSON  
COUNTIES**

**Mission Statement**

The RSVP of South Central Texas has a dual purpose of engaging persons 55 and older in volunteer service to meet critical community needs and to provide a high quality experience that will enrich the lives of the volunteers.

**Seguin Office**

RSVP  
1000 W. Court St.  
Texas Lutheran University  
Seguin, TX 78155

830-379-0300  
[bweyland.rsvp@tlu.edu](mailto:bweyland.rsvp@tlu.edu)



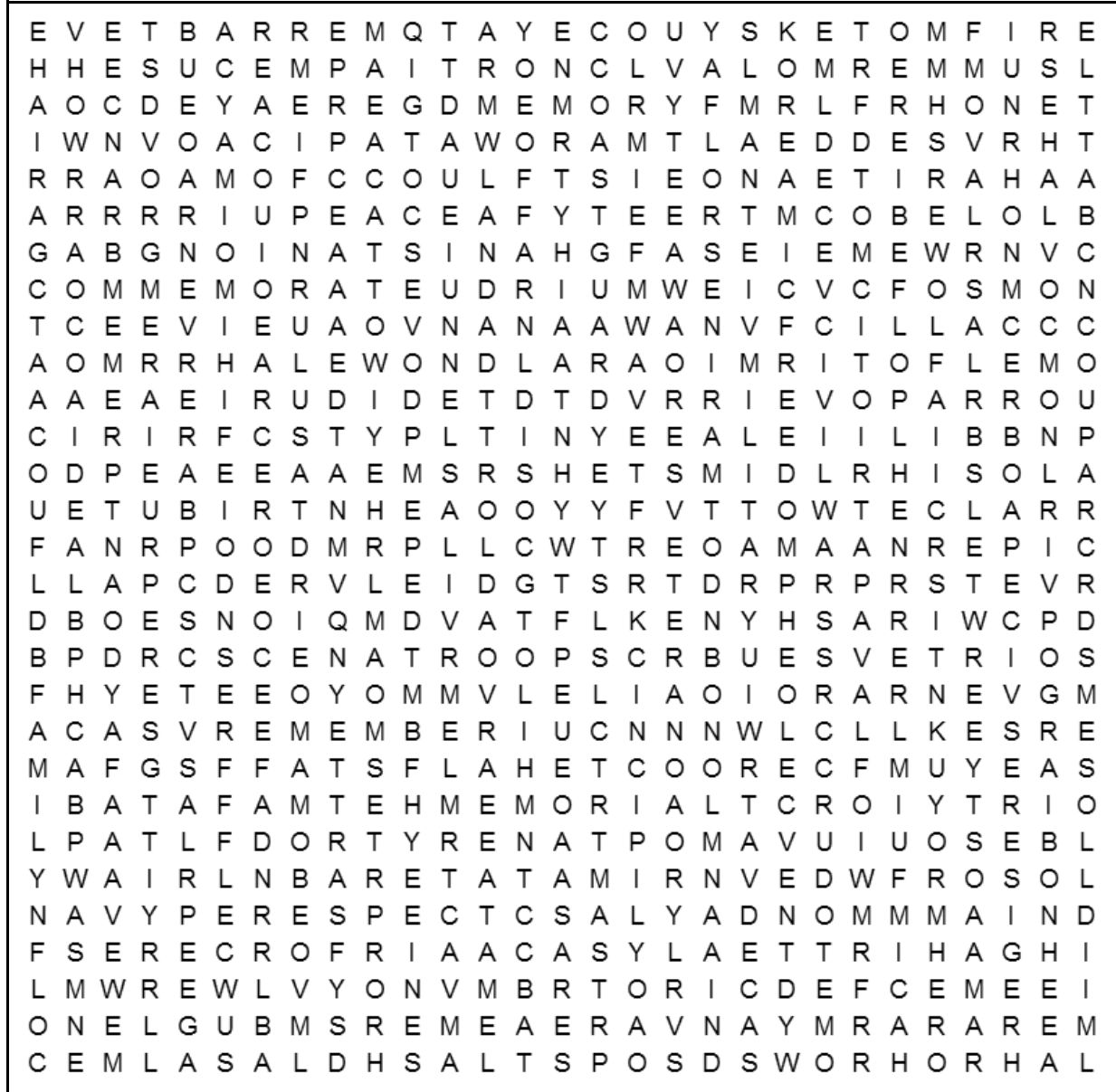
**LEAD.  
INSPIRE.  
CHANGE THE  
WORLD  
AGAIN.**

**Make a difference in  
your community today.**

**South Central Texas  
RSVP**

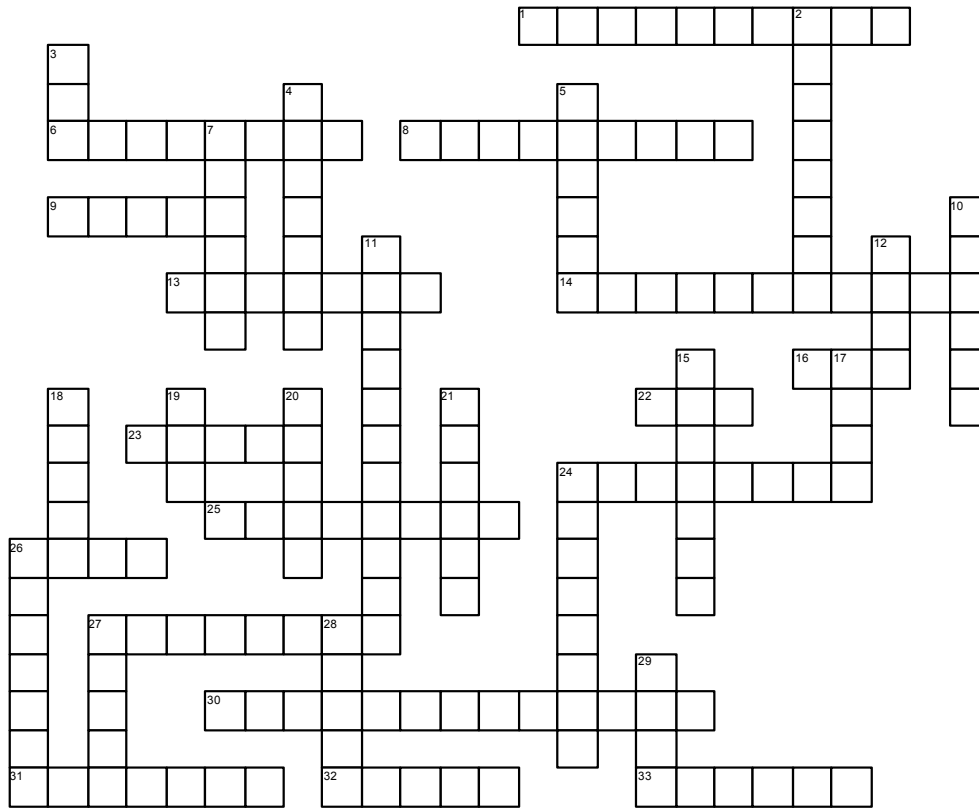
[www.rsvptlu.org](http://www.rsvptlu.org)

# Memorial Day Challenge



Afghanistan	country	honor	patriotic	summer
Air Force	courage	independence	peace	taps
American Revolution	Decoration Day	Iraq	picnic	tombstone
Army	defend	Korea	poppies	tribute
barbecue	family	liberty	remember	troops
battle	fireworks	Marines	remembrance	vacation
bugle	flag	May	respect	valor
casualty	flowers	memorial	salute	veteran
cemetery	freedom	memory	service	Vietnam
ceremony	grave	military	soldier	World War I
civil war	half-staff	Monday	solemn	World War II
Coast Guard	hero	Navy	speech	wreath
commemorate	holiday	parade		

# Memorial Day Challenge



## ACROSS

- 1 Position of the flag when it is flown midway up the pole. (Includes hyphen.)
- 6 The opposite of forget.
- 8 Inspired by love for one's country.
- 9 A name given to the Northern army during the Civil War.
- 13 People march in them.
- 14 A name give to the Southern army during the Civil War.
- 16 Memorial Day is celebrated in this month.
- 22 Missing in action.
- 23 To show respect for.
- 24 A place filled with many graves.
- 25 Memorial Day began as a tribute to soldiers killed in this conflict. (Two words.)
- 26 America's has 13 stripes and 50 stars.
- 27 Someone injured or killed in military action.
- 30 Memorial Day was originally known by this name. (Two words.)
- 31 A person who defends his or her country.
- 32 A flower associates with Memorial Day.
- 33 Memorial Day is considered the start of this vacation season.

## DOWN

- 2 Soldiers trained to engage in aerial missions. (Two words.)
- 3 The opposite of peace.
- 4 One who has served in the military.
- 5 A meal eaten outside.
- 7 Memorial Day is celebrated on this day of the week.
- 10 A public discourse.
- 11 A day for remembering those who have died in service to their country. (Two words.)
- 12 Soldiers trained to fight primarily at sea.
- 15 The state of being free.
- 17 Soldiers trained to fight primarily on land.
- 18 Awarded for specific acts of courage or service.
- 19 Prisoner of war.
- 20 Where someone is buried.
- 21 A ring of flowers.
- 24 A public gathering held to observe a special occasion.
- 26 Often placed on graves.
- 27 Memorial Day began after the \_\_\_\_\_ War.
- 28 A group of soldiers.
- 29 A bugle plays this at the end of the day.

## Calling all people who would like to help us as Volunteers!

We truly need someone to help us set up the announcement letters on the street sign out front, assist us in setting up the rooms for scheduled events, tidy up rooms after events, if you're certified we could use your help in the kitchen or bar area, and on occasion we need help with news articles, & folding the newsletter so it can get to the post office on time. Are you looking for a way to help?

**(830) 303-6612**

Please call  
Glenda Partain  
Tuesday – Friday after 2  
to discuss the possibilities!

## Guadalupe County Crime Stoppers



**877.403.TIPS (8477)**  
**[www.gccsTIPS.org](http://www.gccsTIPS.org)**

Guadalupe County Crime Stoppers  
P.O. Box 542  
Seguin, Texas 78156-0542



*"The agency with a heart"*  
**ADVANCED**  
HOME HEALTH SERVICES™

1064 E. Ireland Seguin, Texas  
**830-379-6171 • 800-288-3921**

### Our Services Include:

Nursing • Physical Therapy • Home Health Aides  
Speech Therapy Occupational Therapy

*Serving Guadalupe, Comal, Caldwell,  
Hays, Gonzales, Wilson  
and surrounding counties since 1995.*



**Voted Best Home Healthcare  
by Readers Choice 2018**



- Large Apartments/3 floor plans to choose from
- Selective menu at all meals
- Daily Activities
- Loving Competent Care
- Family Owned and Operated

[www.SeguinAssistedLiving.com](http://www.SeguinAssistedLiving.com)

226 Preston Dr., Seguin, Texas 78155

Call Karen Taylor or Lindsey Taylor to schedule your tour today!

(830) 379-8882


License #050604



*"Look to Seguin Assisted Living for a Carefree Future"*

A black and white advertisement for CIMA Hospice. The background is a close-up photograph of two hands, one larger and one smaller, gently holding each other. The text is overlaid on the image.

**Where there is LOVE,  
there is LIFE!**

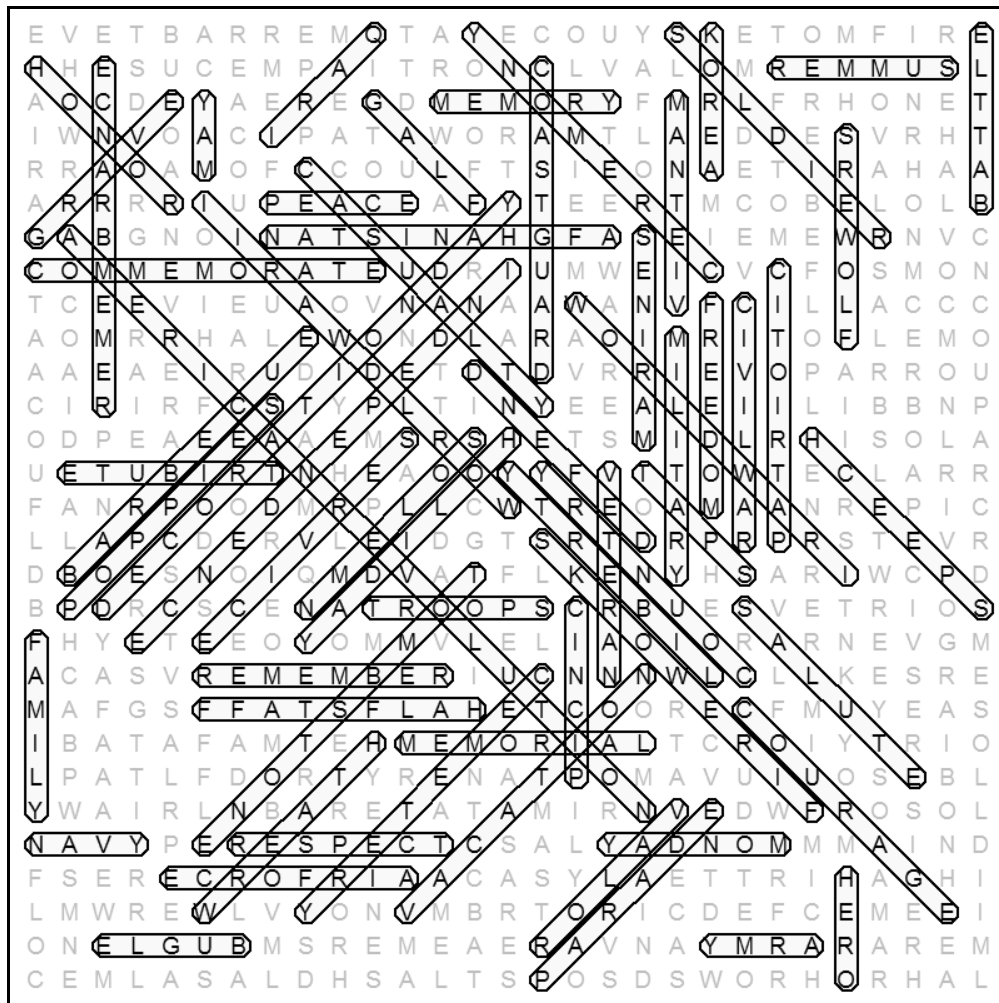
 **CIMA**  
CIMA HOSPICE  
**830.643.1971**  
[www.cimahospice.com/central-texas](http://www.cimahospice.com/central-texas)

# May 2025

SUN	MON	TUE	WED	THU	FRI	SAT
				1 Lions Meeting, Zonta Board Meeting	2 MahJongg, Line Dancing	3 Elections 7-7
4 Car Club Meeting 2-3	5 Closed	6 Marathon Bridge Tournament, Bridge - 4	7 Bridge - 8, Study Club Lunch, Mahjongg	8 Lions Meeting	9 MahJongg, Line Dancers	10 Closed
11 Mother's Day	12 Closed Gideon's Meeting	13 Bridge - 8	14 Zonta Meeting, Mahjongg	15 SHS Choir Banquet, Lions, Conservative Republican Meeting	16 Wrangler Country Dance, Mahjongg, Line Dancers	17 Private Events
18 Closed	19 Closed	20 Bridge - 4	21 Bridge - 8, River Bend Healthcare Lunch & Learn	22 GCRW Lunch, Lions, Pain Specialists Lunch & Learn	23 MahJongg, Line Dancers	24 Private Events
25 Closed	26 Memorial Day	27 Bridge - 8,	28 Zonta Meeting	29 Friedens Bunco, Police Academy Graduation	30 Gabe Galvan Dance, Mahjongg, Line Dancers	31 Private Events



# Answer Key



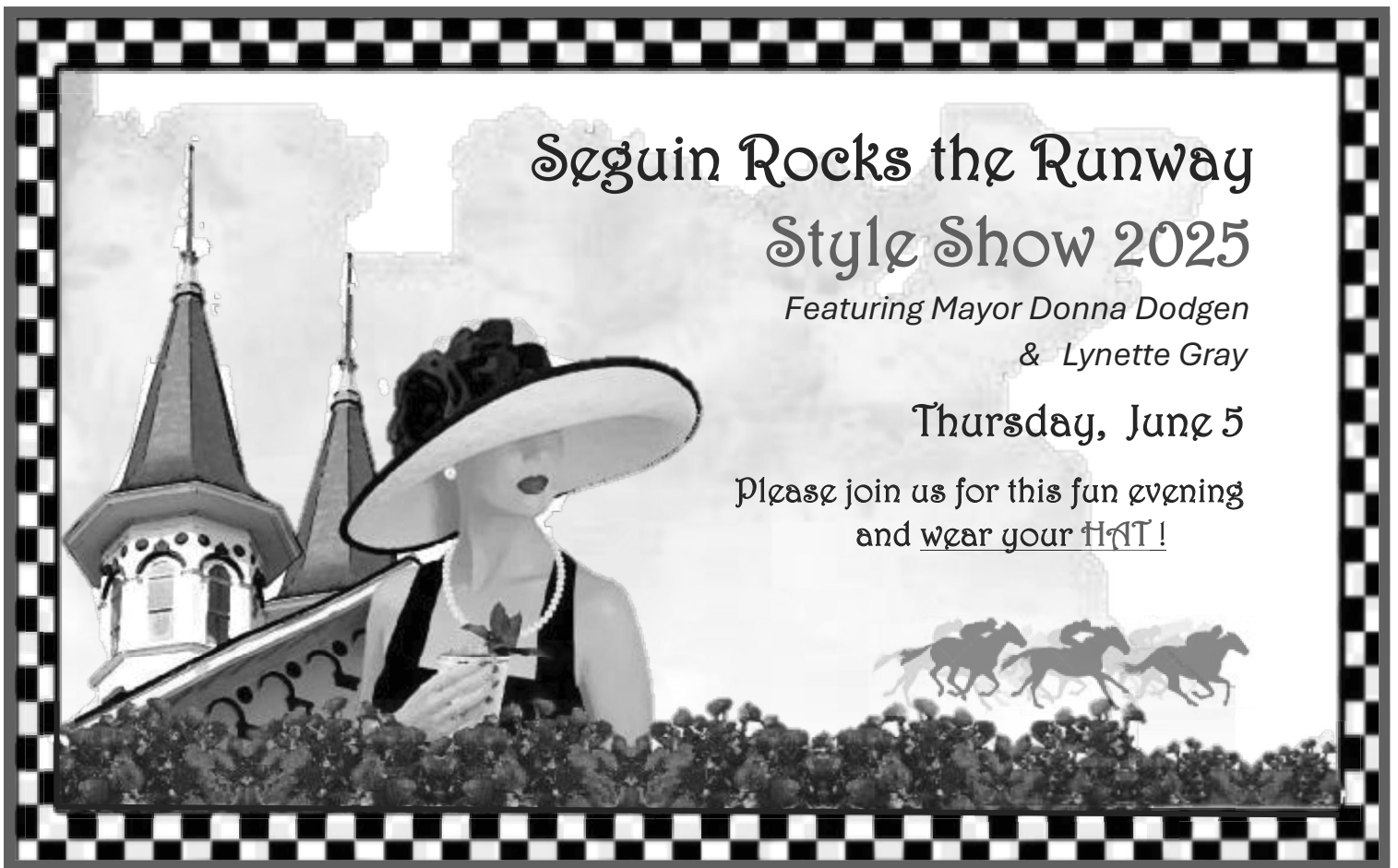


# Seguin Rocks the Runway Style Show 2025

Featuring Mayor Donna Dodgen  
& Lynette Gray

Thursday, June 5

Please join us for this fun evening  
and wear your HAT!



*The Crystal Chandelier Ballroom*



Doors open 6:00 pm – show starts 7:00 pm

Tickets \$35

*heavy hors d'oeuvres - one complimentary beverage -  
cash bar available – prize drawings*

Event Platinum Sponsor: \$2500

Gold Star - \$1000

Silver Star - \$500

Bronze Star - \$300

*Sponsors Receive Reserved Tables for 8 and Special Recognition*

*Tickets available at The Silver Center*

Please contact Glenda Partain at 830-303-6612

[silvercenter@sbcglobal.net](mailto:silvercenter@sbcglobal.net)



# GIFTED HEARTS

## Hospice & Palliative Care

YOUR STRONG SUPPORT

[www.giftedheartshospice.com](http://www.giftedheartshospice.com)

### OUR SERVICES:

- Routine Home Care
- Respite Care
- Continuous Crisis Care
- General Inpatient Care
- Palliative Care
- Physical Therapy
- Psychosocial Therapy
- Bereavement Counseling
- Social Services

### HOSPICE CARE

Hospice care focuses on those with life limiting illnesses. Hospice is a philosophy of caring that promotes quality of life by enhancing comfort for you and your loved ones—physically, emotionally, spiritually—with dignity as a fundamental goal of care.

### PALLIATIVE CARE

Palliative care focuses on those with serious illnesses which may or may not be terminal. Palliative care provides comfort and symptom relief during the difficult seasons of infirmity.

**(830) 715-9299**



## JEMIMA CARING

### Personal Care Home

[www.jemimacaring.com](http://www.jemimacaring.com)

### WHO WE ARE

We offer a full spectrum of services designed to ensure the highest level of comfort and health for our residents. Our approach integrates professional medical oversight with personalized support, ensuring every individual's needs are met with compassion and expertise.

**(830) 369-1782**

### OUR SERVICES:

- 24-Hour Support
- Personal Grooming
- Medical Oversight
- Memory Care
- Physical Therapy

### ACTIVITIES:

- Physical Fitness
- Cognitive Stimulation
- Creative Workshops
- Outdoor Activities
- Personal Care
- Culinary Delights

**Seguin-Guadalupe County Senior Citizens Center**  
**The Silver Center (a 501©3 Charity)**

**Membership Application**

**Business (or Your Name)** \_\_\_\_\_

**Primary Contact** \_\_\_\_\_

**Address** \_\_\_\_\_

**Phone** \_\_\_\_\_ **Fax** \_\_\_\_\_

**Email** \_\_\_\_\_

**Website Address** \_\_\_\_\_

**Annual Membership Levels**

☐ **Standard PERSONAL Membership**      \$ 40.00  
(**\$20 off a room rental**)

☐ **Standard Business Membership**      \$ 125  
(listed in our business membership in the newsletter)

☐ **Gold Business Membership**      \$ 250  
(listed in our business membership & 1 month free ad in newsletter)

☐ **Platinum Business Membership**      \$ 500  
(listed in our membership & 2 months free ad in newsletter & 10% discount on a rental)

☐ **Diamond Business Membership**      \$1,000  
(listed in our membership & 1 year free ad in newsletter & 10% discount on a rental)

☐ **Please invoice to the above address**

☐ **Make your check payable to "The Silver Center"**

**Are you interested in:**

- ☐ **Volunteer opportunities in exchange for business recognition.**
- ☐ **Providing a "Lunch and Learn" event for the community.**
- ☐ **Advertising in the center's monthly newsletter.**
- ☐ **Participation on the Board of Directors level for The Silver Center.**

# ADVANCED Hearing aid center

Comprehensive Hearing Evaluations  
Digital Technology•Repair & Service of Most Brands  
Hearing Aid Batteries•Swim Plugs•Earbuds  
Assistive Listening Devices

*30-Day Trial Period*

*Financing Available*

*Medicaid & Most Major*

*Insurances Accepted*

122 S. Moss ~Seguin, Texas 78155

"Across from Guadalupe Regional Medical Center"



NATIONAL BOARD FOR  
CERTIFICATION IN  
HEARING  
INSTRUMENT SCIENCES

Amy Trost,  
BC-HIS, ACA  
Owner  
Independent  
Hearing Instrument  
Specialist

**"to help you hear  
better we listen with  
our heart..."**

**830-372-2237**

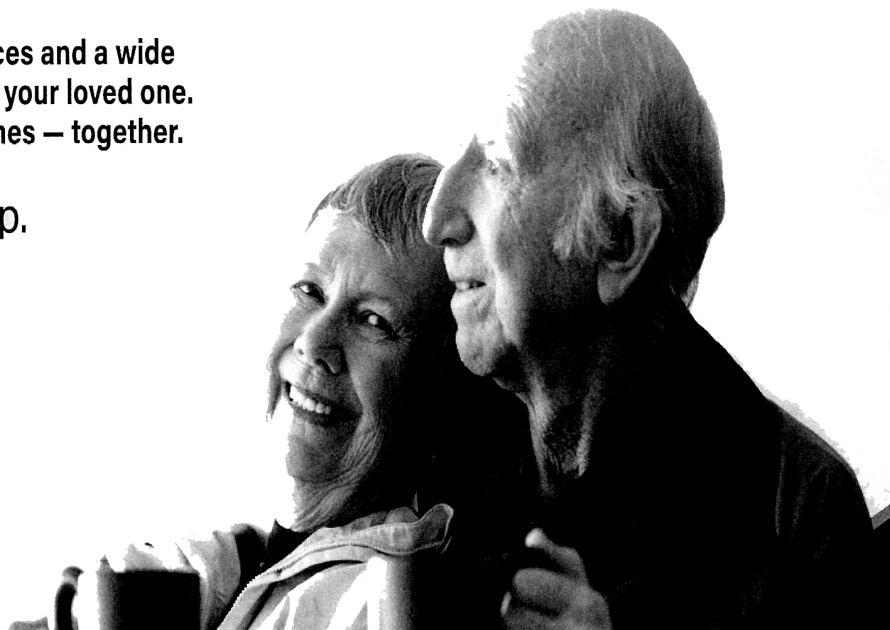
**830-372-2380(fax)**

## EASTER WORD SCRAMBLE ANSWERS

INDEPENDENCE  
AMERICAN FLAG  
NATIONALIST  
VICTORIOUS  
PATRIOTIC  
RESOLUTE  
SOLDIER  
FEARLESS  
CELEBRATION  
DEVOTION

Our staff offers unique funeral services and a wide  
variety of memorial options for you or your loved one.  
Call today to start planning your wishes — together.

We're here to help.



*Goetz*

**830-379-2313**  
713 N. Austin St.  
Seguin, TX 78155  
goetzfuneral.com

  
**GUADALUPE VALLEY**  
MEMORIAL PARK

**830-609-4906**  
2951 S. State Hwy 46  
New Braunfels, TX 78130  
guadalupevalleymemorialpark.com

***In memory of William “Billy” Haese***

Glenda & Norman Partain

Barbara Behal

Betsy & Paul Martin

Karen & Gerald McMath

***In memory of Ford Martin***

Evelyn Martin

***In memory of Edna Eckroat***

Pat Norman

***In memory of Richard Solomon***

Pat Norman

***In memory of Kenneth Houston***

Pat Weber



# MEMORIALS

*\*\*\* Note that any memorials received after we go to press will be in the next month's newsletter.*

**You will all be missed...**



Memorial in Honor of:

\_\_\_\_\_

Send Acknowledement to

Name: \_\_\_\_\_

Address: \_\_\_\_\_

City: \_\_\_\_\_

State/Zip: \_\_\_\_\_

Memorial From: \_\_\_\_\_

Name: \_\_\_\_\_

Address: \_\_\_\_\_

City: \_\_\_\_\_

State/Zip: \_\_\_\_\_

**Thank you for the remembrance**

*The Silver Center*

*510 E. Court • Seguin, Texas 78155*

## THM

**Tres Hewell Mortuary, Inc.**

Family Owned and Operated

**Tres Hewell, President**

P.O. Box 820  
165 Tor Drive  
Seguin, Texas 78156

Phone (830) 549-5912  
Fax (830) 549-5918  
Cell (830) 660-5809

[www.treshewell.com](http://www.treshewell.com)

# LET'S TALK PAIN LUNCH AND LEARN HOSTED BY DR. RYAN MICHAUD

**Thursday, May 22nd at 12:00 p.m.**

**Silver Center - 510 E. Court St. Seguin, TX 78155**

*Lunch will be provided.*

Dr. Michaud will discuss chronic pain conditions such as neuropathy, back pain, and joint pain, along with their treatment options.

**Medical School**

- University of Texas Health Science Center  
San Antonio, Texas

**Fellowship**

- University of Utah  
Salt Lake City, Utah

**Residency**

- University of New Mexico  
Albuquerque, New Mexico

**Board Certifications**

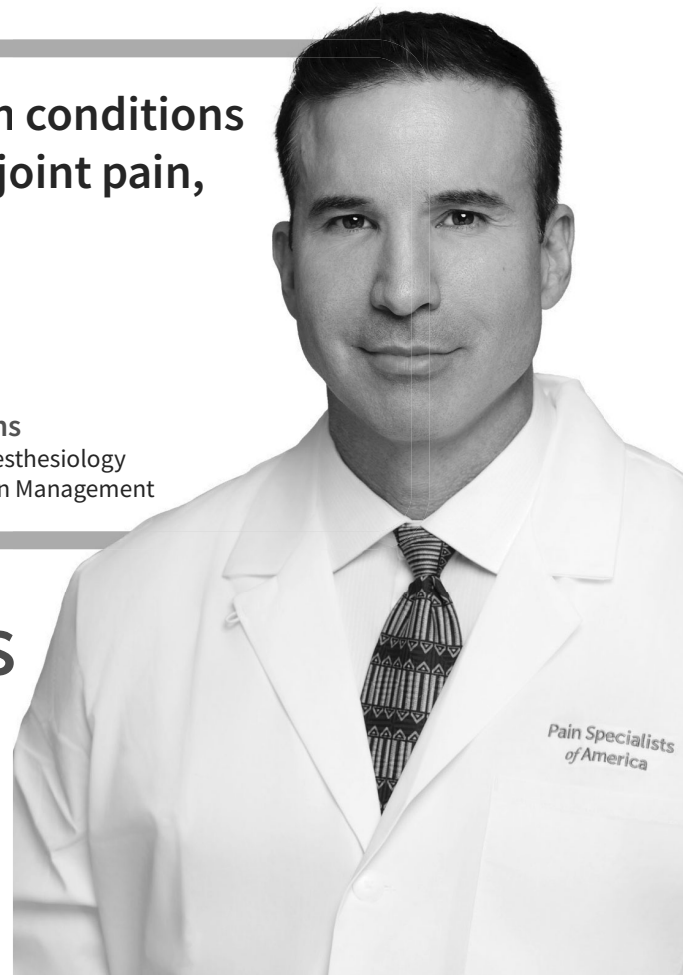
- Board Certified in Anesthesiology
- Board Certified in Pain Management



**Pain Specialists  
of America**

**Seguin**

**417 South King Street  
Seguin, TX 78155**



**PLEASE RSVP TO SILVER CENTER**

# Guadalupe Regional Medical Center Earns Prestigious Awards for Patient Experience, Obstetrics, and Orthopedics

## Excellence in Patient Experience



Guadalupe Regional Medical Center (GRMC) has achieved notable recognition, being named one of America's 100 Best Hospitals for Patient Experience by the Women's Choice Award. The Women's Choice Award acknowledges hospitals that excel in patient satisfaction and care quality. GRMC's ranking among the top 100 hospitals is a testament to its dedication to creating positive experiences for patients, a critical factor that influences treatment outcomes and overall well-being.

## Leading in Obstetrics Care



GRMC has also been distinguished as one of America's Best Hospitals for Obstetrics by the Women's Choice Award, placing it in the top 13% of U.S. hospitals for maternity care. This recognition underscores GRMC's commitment to providing safe, high-quality care for expectant mothers and their babies. The award criteria include national accreditations, patient satisfaction scores, and clinical excellence in obstetrics services.

## Outstanding Orthopedic Services



In addition to its accolades in patient experience and obstetrics, GRMC has been recognized as one of America's Best Hospitals for Orthopedics, placing it in the top 6% nationwide. This honor reflects GRMC's exceptional orthopedic care, emphasizing patient safety, low complication rates, and comprehensive services, including joint replacement and spine surgery.

## Commitment to Quality and Safety

The Women's Choice Award evaluates hospitals based on Hospital Consumer Assessment of Healthcare Providers and Systems (HCAHPS) survey results and primary research on women's healthcare preferences. This comprehensive assessment ensures that the recognized hospitals meet the highest standards for patient care and satisfaction. With these distinguished awards, Guadalupe Regional Medical Center continues to set a high standard in healthcare, affirming its role as a leader in patient-centered care and clinical excellence.

SEGUIN-GUADALUPE COUNTY  
SENIOR CITIZENS' CENTER  
510 E. COURT STREET  
SEGUIN, TEXAS 78155

U.S. POSTAGE PAID  
NON-PROFIT  
SEGUIN, TX  
PERMIT NO. 23

May 2025



Emergency **care.** That's **always** there.



[grmedcenter.com](http://grmedcenter.com) • 830.379.2411

Guadalupe Regional  
MEDICAL CENTER

