

The Silver Showcase

Volume 1002

No.12

Email:silvercenter@sbcglobal.net • Website:www.silvercenterseguin.com

December 2025

Board of Directors

President

Rosie Van Booven

Vice President:

Barbara Behal

Treasurer:

Gay Lynn Olsovsky

Secretary:

Syndee Bundick

Board Members

Gary Kubenka

Norman Partain

Bingo Chair

Gay Lynn Olsovsky

SILVER CENTER STAFF

Executive Director

Glenda Partain

Book Keeper

Pat Weber

Cook

LuAnn Archibeque

Catering Supervisor

Brenda Aguilar

Catering Staff

Kelly Perkins-Orozco

Janitor

Phone: (830) 303-6612

Fax: (830) 379-3813

Letter From the President:

Holiday blessings to each of you!!! No matter what you celebrate or how you choose to do it, I truly hope that you are able to do it your own way. We all have various traditions with family and friends, and that certainly makes this time of the year enjoyable. Just please be mindful of those who are possibly alone and struggling. Send that card, make that phone call and be that ray of sunshine that someone might need just to get by.

Our Silver Center has a very full calendar this month. We are truly blessed that so many folks are using us for such a variety of events. I continue to be proud of our staff and volunteers for making it all happen!

This month we will again be serving an evening meal. On Thursday, December 11th, we will have a tamale dinner which will be available "to go" in our drive up line and we will also have inside dining if you desire. Call or come by to purchase tickets in advance so we know how many meals to prepare!

Our Friday night dance in December will be Byron Zipp on December 12th. The Gabe Galvan Band will help celebrate New Year's Eve with us on December 31st. Come on out and have fun with us! Tickets are on sale so get them soon!

With the end of the year quickly approaching, if you make charitable donations, I would appreciate you considering the Silver Center. We are a 501(c)(3) nonprofit organization. We do not get any governmental assistance and rely on our membership dues, events and donations to support what we do.

Please be safe and remember to tell your friends and family that you love them! Happy Holidays and we hope to see you soon!

Rosie Van Booven



HELLO FROM THE FRONT DESK....

Welcome December! December is the month of love, presents, great food, and spending time with family & friends... I hope your December has all of the above and more!

We have a couple of GREAT DANCES that I hope you will consider coming to. Why? Because you deserve to listen to some GREAT local music... and you deserve spending time with some GREAT people right here at The Silver Center!

December 12th we have BYRON ZIPP playing his fabulous fiddle with a band that will usually knock your socks off! Presale tickets are on sale now for just \$10 and they will be \$15 at the door. This is the only *regular* dance we have this month, (because of the holiday) so grab a table and grab some friends and let's enjoy the evening together!

December 31st we will host a memorable NEW YEARS EVE DANCE with Gabe Galvan and his Band. Tickets are on sale now and we expect a full house that evening, while we 'Ring in the New Year' at midnight with Tamales, Black Eyed Peas (for a LUCKY 2026) and complimentary Champagne. *Dress up or come comfortable, but please come on out and enjoy a fun, safe night in Seguin!*

We have several big Christmas parties on the books, a large birthday party, and lots of civic and political organizations meeting here to celebrate the end of the 2025 Holiday season, but we close it all down on December 20th so our staff can enjoy some fun filled time with *their* families...

PLEASE REMEMBER IF YOU NEED NEW YEARS EVE TICKETS, TO COME BY BEFORE THE 20TH OF DECEMBER OR CALL US @ 830-303-6612 TO GET YOUR TICKETS USING YOUR CREDIT CARD!

May God Bless you, and may December bring you wonderful memories as we celebrate the birth of Jesus Christ, our Savior. Hallelujah! He is born!



Glenda Partain

BUSINESS MEMBERS

The Silver Center is sincerely grateful for the support of our faithful Business Members.

DIAMOND MEMBERS

Guadalupe Regional Medical Center
Seguin Noon Lions
Gifted Heart Hospice
McQueeney Lions Club

PLATINUM MEMBERS

Westerhom-Koehler Insurance
CMC Commercial Metal Company

GOLD MEMBERS

First United Bank
2-G Consulting LLC
Kimberly A Illhardt CPA LLC
Excelin Health, LLC * Concentration

STANDARD MEMBERS

GVEC
Partners LLC
Sunrise Lions Club
Tres Hewell Mortuary
Zonta Club Of Seguin
NOVA Access Flooring
Gary Kubenka Painting
Seguin Gazette-Enterprise
Guadalupe County Republican Women
Guadalupe County Conservative Republicans
Charles White DPM, FACFAS,- TX Foot & Ankle Surgical Assoc.



If you have a December birthday, and are not on our list, please call us so we can update our records! Please note we currently make to-go lunches, with preorder on Tuesday through Friday!

DECEMBER BIRTHDAYS

Bill Owen	12/1
Brenda Aguilar	12/5
Richard Arp	12/12
JoAnne Hunter	12/12
Mickey Cavin	12/13
Sandra Moline	12/13
Gloria Creekmur	12/15
Buster Cage	12/17
Larry Hicks	12/20
Clara Orbeck	12/21
Lynn Hoermann	12/22
Nona Kay Scales	12/23
Randee Malmsten	12/24
Gay Lynn Olsovsky	12/27
Francene Smith	12/28
Charles Villeneuve	12/29
Jamie Doyle	12/30
Debbie Soefje	12/30
Gloria Elder	12/31
Charlie Moss	12/31

Christmas Word Scramble

RREENEEVG _ _ _ _ _

SMALLURGUP _ _ _ _ _

TEIPPNERMP _ _ _ _ _

EILFZ IVDANAD _ _ _ _ _

ENAVDT DALCRAEN _ _ _ _ _

ISHEGL DIER _ _ _ _ _

IHWET HSARSCTMI _ _ _ _ _

ASATN YABB _ _ _ _ _

SOFYTR HTE MWNONAS _ _ _ _ _

INEJLG LEBL COKR _ _ _ _ _

Please call Glenda Partain at (830) 303-6612 today to volunteer a couple of hours of your time around the Center.

**VOLUNTEER - HOURS - NOVEMBER
420 Hrs**

THANK YOU to all of our VOLUNTEERS that helped us serve our community and those who are helping us deliver meals!

May God Bless all of our Board of Directors who volunteer so much of their time to assist us with special events, dances, and more!

CHARITABLE DONATIONS FOR NOVEMBER

Rosie Van Booven
Gay Lynn Olsovsky
Barbara Behal
Syndee Bundick
Gary Kubenka
Glenda & Norman Partain
LuAnn, Pat, Kelly, & Brenda
Dana Dawson

Christmas Funnies

Did you hear about the shepherd that drove his sheep through town?
He was given a ticket for making a ewe turn

What do donkeys send out near Christmas?
Mule-tide greetings!

How did the reindeer learn to play the piano?
He was elf-taught.

Why did the Little Drummer Boy put his drum to bed?
It was beat.

What does Santa suffer from when he gets stuck in a chimney?
Claus-trophobia!

What do you call an obnoxious reindeer?
Rude-olph

Who is never hungry at Christmas?
The turkey – he is always stuffed.

Which of Santa's reindeer has the best moves?
Dancer

What did the ocean say when Santa flew over?
Nothing. It just waved.

What's as big as a Christmas tree but is light as a feather?
It's shadow.

Where do young trees learn to become Christmas trees?
Elementree School!

Dec. 12, 2025 7:30PM Byron Zipp & Friend

31 New Year's Eve 8:00PM Gabe Galvan Band

+++++

Jan. 2026 9 7:30PM Bimbo & Borderline

23 Paul Sanchez & Wrangler Country

February 13 Kerr Creek Band

27 *To Be Determined*

March 13 Paul Sanchez & Wrangler Country

27 Gabe Galvan Band

April 10 Kerr Creek Band

24 *To Be Determined*

May 8 Paul Sanchez & Wrangler Country

22 Gabe Galvan Band

June 12 Bimbo & Borderline

26 *To Be Determined*

July 10 Kerr Creek Band

24 *To Be Determined*

August 14 Paul Sanchez & Wrangler Country

28 *To Be Determined*

September 11 The Merles

25 *To Be Determined*

October 9 Bimbo & Borderline

23 *To Be Determined*

November 13 Paul Sanchez & Wrangler Country

27 No dance - Thanksgiving weekend

December 11 Bimbo & Borderline

25 No Dance - Christmas Day

We ♥ Our



LuAnn Archibeque

Barbara Behal

Syndee Bundick

“Buster” Cage

Mary Jane Cage

Jamie Evans

Brenda Englemann

Anna Ezell

Dena Flanagan

Tom Franczak

Martha Greenlaw

Shirla Humiston

Bob Kellner

Gary Kubenka

Pierce Law

Glenda Partain

Casey Pruett

Sharee Layton

Karen McMath

Betsy Martin

Evelyn Martin

Gay Lynn Olsovsky

Norman Partain

Kelly Perkins-Orozco

Santa Smith

Kay Stuart

Rosie Van Booven

Pat Weber

Liz Witten



**Come DANCE off the
Thanksgiving Calories...**



**Dance to the fabulous
Country Music of
BYRON ZIPP & FRIENDS**

@ The Silver Center

510 E. Court St. Seguin, TX

Friday, December 12, 2025 @ 7:30PM

Pre-Sale \$10 \$15 At the door!

(830) 303-6612

**The Silver Center will be CLOSED FOR THANKSGIVING
11/26 - 12/01/2025 for some holiday time with families...**

Get your Presale tickets today!



Easy Christmas Candy 'Crack'(ers) Recipe

This Easy 5-Ingredient Christmas Crack Recipe is a holiday favorite! It's sweet, salty, caramel-y and so chocolate-y. Prep Time 20 minutes Servings 30 pieces Author Jo-Anna Rooney

Ingredients

- 36 - 40 saltine crackers
- 1 cup butter
- 1 cup brown sugar
- 1/2 tsp vanilla
- 2 cups semi-sweet chocolate chips

Instructions Preheat your oven to 350 degrees.

1. Line a baking sheet with a sheet of aluminum foil, making sure to wrap it up over the edges of the pan (see images above).
2. Spray the foil with a light dusting of cooking spray.
3. Line the saltine crackers on the sheet, in one even single layer of saltine crackers.
4. In a saucepan on low-medium heat, melt the butter.
5. Stir in the brown sugar.
6. While continuously stirring, bring the sugar mixture to a low boil and simmer for about 3 minutes, then remove it from the heat. Note: the sugar should be dissolved.
7. Stir in the vanilla. Make sure this mixture is well blended.
8. Pour the caramel mixture all over the crackers. You will need a spatula to spread it evenly over the crackers (see images above).
9. Place the caramel covered crackers in the oven for 5-7 minutes.
10. Remove from the oven and let the caramel rest for 1 minutes.
11. Then sprinkle the chocolate chips over the caramel layer. Let them sit for about 1 minute.
12. Then using a spatula, smooth the chocolate over the caramel layer. Go slow, and use long strokes with your spatula. If you spread the chocolate too fast the caramel layer will mix in with the chocolate. And make sure to spread the chocolate as close to the outer edges of the crackers as possible.
13. Let cool at room temperature for about 10 minutes, then cover with a sheet of tin foil tented over the pan...you don't want the tin foil to touch the chocolate.
14. Refrigerate for several hours, but overnight is best.
15. Once hardened, break off pieces and enjoy!



Sweet Potato Casserole

Ready In: **50mins** Serves: **10**

CASSEROLE INGREDIENTS

- **3** cups mashed **sweet potatoes**
- $\frac{1}{2}$ cup **sugar**
- **2** **eggs**
- $\frac{1}{4}$ cup **butter**, melted
- $\frac{1}{2}$ cup **milk**
- **1** $\frac{1}{2}$ teaspoons **vanilla**

PECAN TOPPING

- **1** cup **brown sugar**
- $\frac{1}{2}$ cup **flour**
- **1** cup chopped **pecans**
- $\frac{1}{3}$ cup **butter**, melted

DIRECTIONS

1. In large mixing bowl, mix sweet potatoes, sugar, eggs, butter, milk & vanilla.
2. Pour into 9 inch square *greased* baking dish.
3. Mix topping ingredients and sprinkle over potatoes.
4. Bake at 350 degrees for 35-40 minutes.
5. Can be doubled and baked in 9x13 dish. (Add 15-20 minutes to baking time.)
6. Serve hot as a side or cold as a dessert with a dollop of whipped cream. **ENJOY!!!**

4 Letter Words

BELL
SNOW

5 Letter Words

ANGEL
COCOA
ELVES
HOLLY

6 Letter Words

LIGHTS
SLEIGH
TINSEL
WINTER
WREATH

7 Letter Words

CHIMNEY
GARLAND
PAGEANT
RUDOLPH
SNOWMAN

8 Letter Words

CAROLING
DECEMBER
EXCHANGE
ORNAMENT
PRESENTS
REINDEER
WRAPPING

9 Letter Words

CHESTNUTS
CHRISTMAS
EVERGREEN
FRUITCAKE
MISTLETOE
NORTH POLE

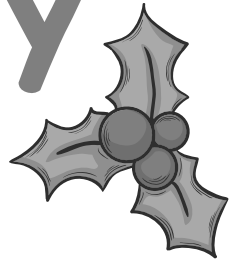
10 Letter Words

POINSETTIA
SANTA CLAUS

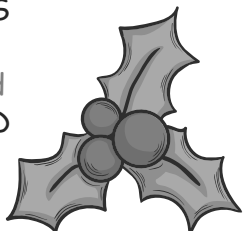
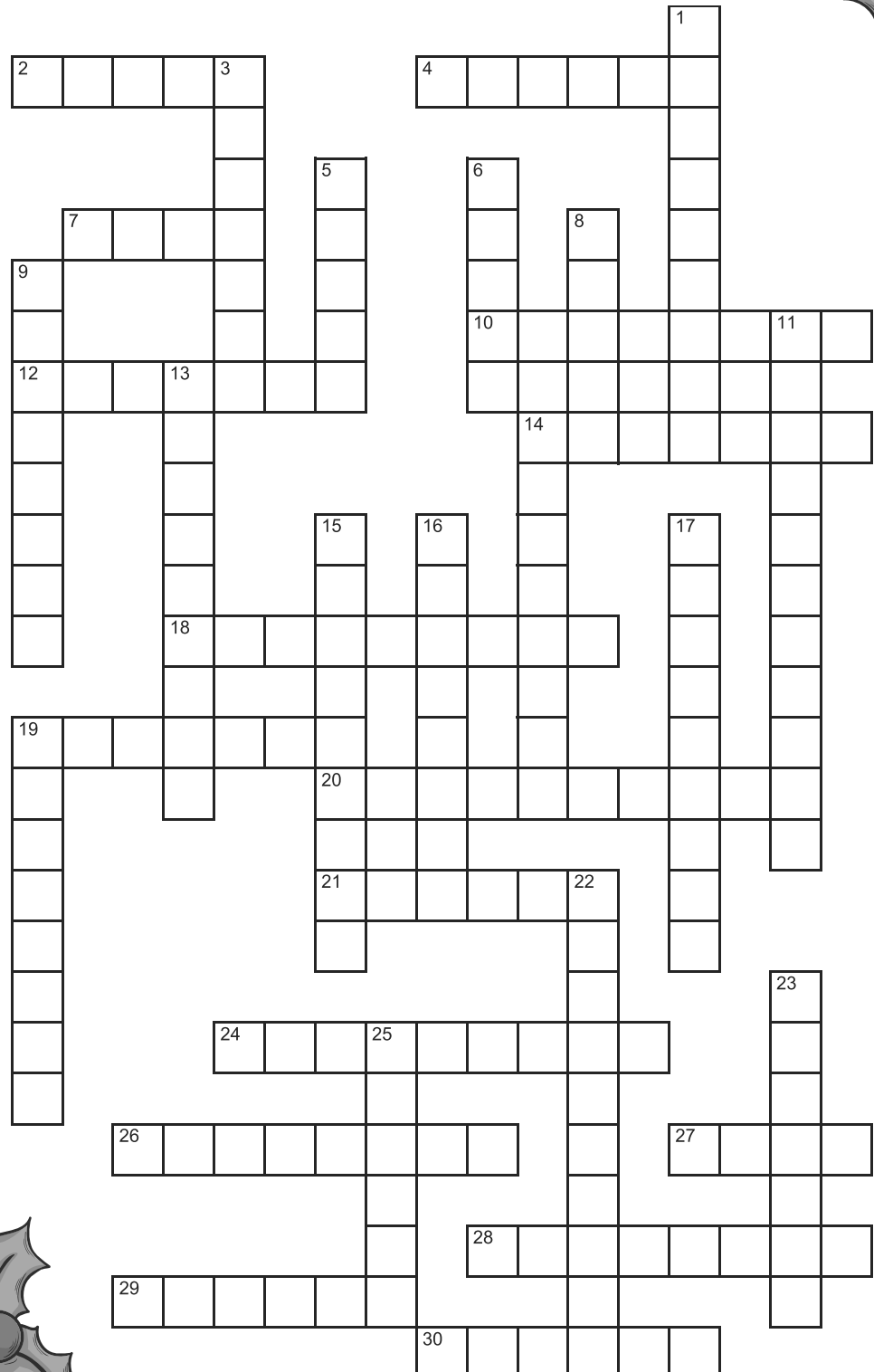
11 Letter Word

GINGERBREAD

Christmas Joy



DIRECTIONS: Fill in the crossword grid with the provided words.



Christmas Treats

Word Search

DIRECTIONS:
Find and circle the
vocabulary words
in the grid. Look
for them in all
directions including
backwards and
diagonally.

BUCHE DE NOEL

CANDY CANE

CHOCOLATE

CLOVES

COOKIES

CRANBERRIES

EGGNOG

FRUITCAKE

S	D	M	I	N	C	E	M	E	A	T	Q	D	K	E	I	Q	E	S
E	F	X	E	I	P	N	I	K	P	M	U	P	V	T	C	M	E	E
I	R	D	Y	Q	Y	X	N	Y	B	Z	P	O	A	A	N	Z	P	G
R	U	V	G	X	K	S	T	U	F	F	I	N	G	L	R	F	Q	N
R	I	B	O	Z	R	R	C	B	R	P	G	T	J	O	S	K	U	A
E	T	O	N	M	C	L	Z	K	I	E	O	M	I	C	T	Z	B	R
B	C	Z	G	L	O	I	M	S	S	E	O	A	F	O	N	P	P	O
N	A	W	G	V	E	E	M	D	C	G	S	E	R	H	G	N	Y	V
A	K	N	E	Q	E	O	N	X	B	R	E	Y	U	C	P	P	U	T
R	E	S	T	A	N	G	N	A	S	M	U	L	P	R	A	G	U	S
C	Z	S	C	Y	D	O	B	E	C	N	G	M	X	A	N	V	D	Q
Y	P	P	Z	F	I	Z	M	S	D	Y	M	I	P	Q	M	U	T	R
E	V	E	G	D	U	F	Q	G	Z	E	D	H	M	T	E	G	T	I
K	P	A	E	C	O	O	K	I	E	S	H	N	T	H	I	E	Z	S
R	Z	W	R	O	Q	R	Y	Q	R	F	P	C	A	N	R	O	D	M
U	W	U	K	G	B	W	N	T	F	M	K	M	U	C	G	N	U	I
T	G	I	N	G	E	R	B	R	E	A	D	E	P	B	K	K	T	S
S	W	E	E	T	P	O	T	A	T	O	E	S	H	B	K	F	G	B
B	M	M	O	O	Y	W	C	R	V	V	K	Q	K	T	H	V	T	L



FUDGE

ORANGES

GINGERBREAD

PUMPKIN PIE

GOOSE

SCRUMPTIOUS

GRAVY

STUFFING

HAM

SUGARPLUMS

MINCEMEAT

SWEET POTATOES

NUTS

TURKEY

Christmas Word Scramble Answers

EVERGREEN

SUGARPLUM

PEPPERMINT

FELIZ NAVIDAD

ADVENT CALENDAR

SLEIGH RIDE

WHITE CHRISTMAS

SANTA BABY

FROSTY THE SNOWMAN

JINGLE BELL ROCK

Calling all people who would like to help us as Volunteers!

We truly need someone to help us set the letters on the large sign out front, assist us in setting up the rooms for scheduled events, tidy up rooms after events and if you're food service certified, we could use your help in the kitchen or bar area!

I would also love your help with news articles, & folding the newsletter so it can get to the post office on time. Are you looking for a way to help?

We would love to discuss it with you!

(830) 303-6612

Please call
Glenda Partain
Tuesday – Friday after 2
to discuss the possibilities!

Guadalupe County Crime Stoppers



877.403.TIPS (8477)

www.gccsTIPS.org

Guadalupe County Crime Stoppers
P.O. Box 542
Seguin, Texas 78156-0542



Please Join us for our
DRIVE THROUGH /DINE IN DINNER
on DECEMBER 11, 2025 FROM 5PM TO 7PM
3 TAMALES (WITH HOMEMADE CHILI)
PINTO BEANS & RICE

We will also have “individual” homemade pies for \$5 if you’d like to purchase a dessert that evening, and we will also have Agave Lime Margaritas (on the rocks) for \$4 each if you’d like to enjoy a fun beverage with your meal!

Thank you for joining us for this fundraiser.
Please see a Board member or call 830-303-6612
for pre-sale tickets!

December 2025

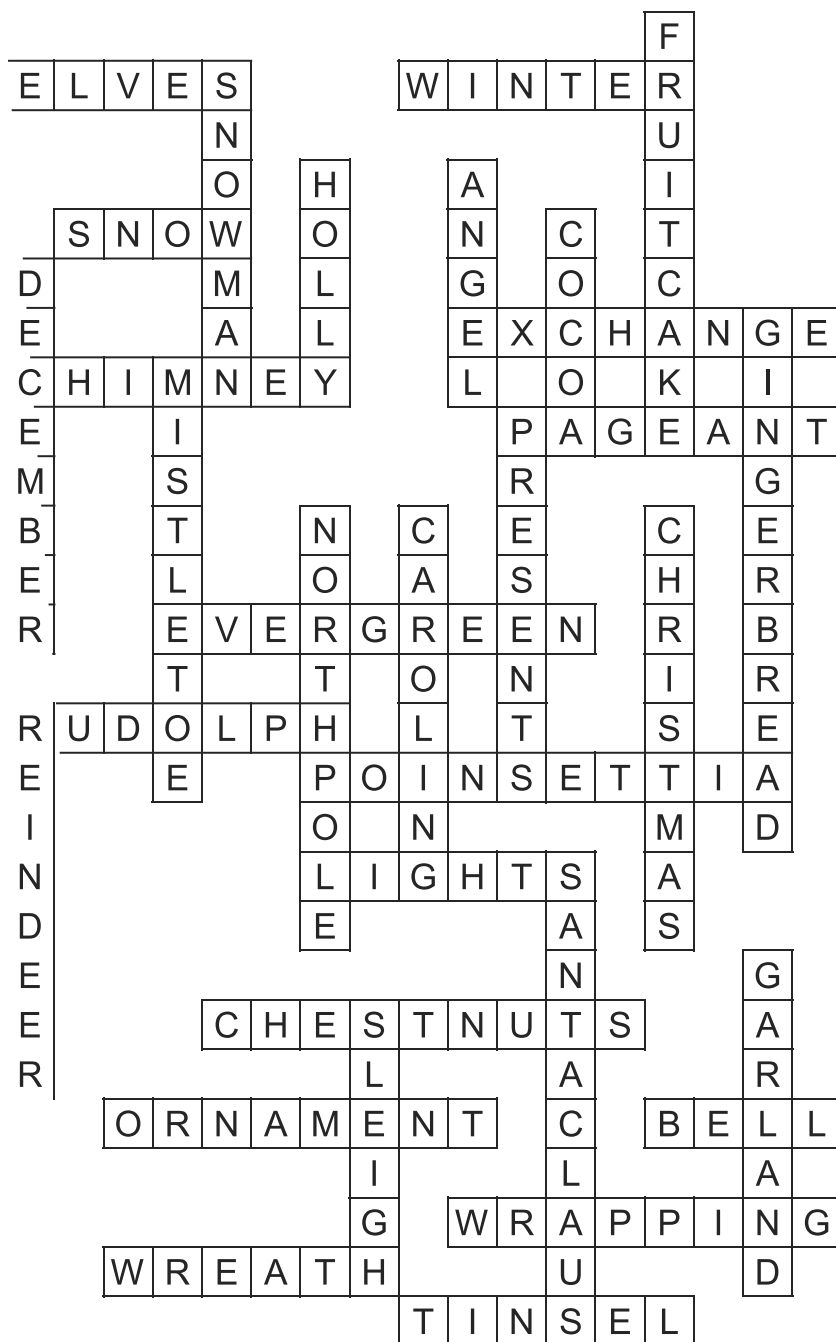


Sun 30	Mon 1	Tue 2	Wed 3	Thu 4	Fri 5	Sat 6
CLOSED FOR THE HOLIDAYS	CLOSED ON MONDAYS	Beta Luncheon Bridge (4)	Bridge (8) Majhongg	Lions Club ZONTA BOARD LUNCH 11:30 AM GCRepublican Women meeting	Line Dancing Majhongg 5:30 PM GR Med Ctr Holiday Luncheon	1:00 PM Celebration of Life 4:00 PM NB Car Club Party
7 Private event Y Rose	8 CLOSED ON MONDAYS Giddeons Meet 6:30 PM Young Republicans Meeting	9 Bridge (8) 5:30 PM Mid Tex symphony meeting	10 Majhongg 11:30 AM Zonta's Luncheon	11 Lions Club 11:00 AM Dr Colville Luncheon 11:30 AM Sunday School Christmas lunch	12 Line Dancing Majhongg 11:30 AM Quilters Christmas lunch 6:30 PM Doors open for Dance 7:30 PM BYRON ZIPP DANCE	13 5:00 PM Private Christmas Party
14	15 CLOSED ON MONDAYS	16 Bridge (4)	17 Majhongg Bridge (8) 6:30 PM Asst Living Party in Y Rose	18 Friedens Bunco Party Lions Club 6:00 PM GVNC Christmas Party Y Rose	19 Line Dancing Majhongg 4:30 PM Community Christmas Ballroom	20 8:00 PM Miller Birthday Party
21	22 CLOSED ON MONDAYS	23 Close at NOON for the Holidays	24 CLOSED FOR THE HOLIDAYS	25 Closed Merry Christmas	26 CLOSED FOR THE HOLIDAY	27 CLOSED HOLIDAY WEEKEND
28 CLOSED HOLIDAY WEEKEND	29 CLOSED ON MONDAYS	30 CLOSED FOR THE HOLIDAYS	31 Closed until the Dance 7:00 PM New Years Eve Dance doors open 8:00 PM Gabe Galvan Dance starts	1 CLOSED FOR THE HOLIDAY	2 Line Dancing Majhongg 8:30 AM We are Open!	3

Christmas Joy

Crossword Fill In

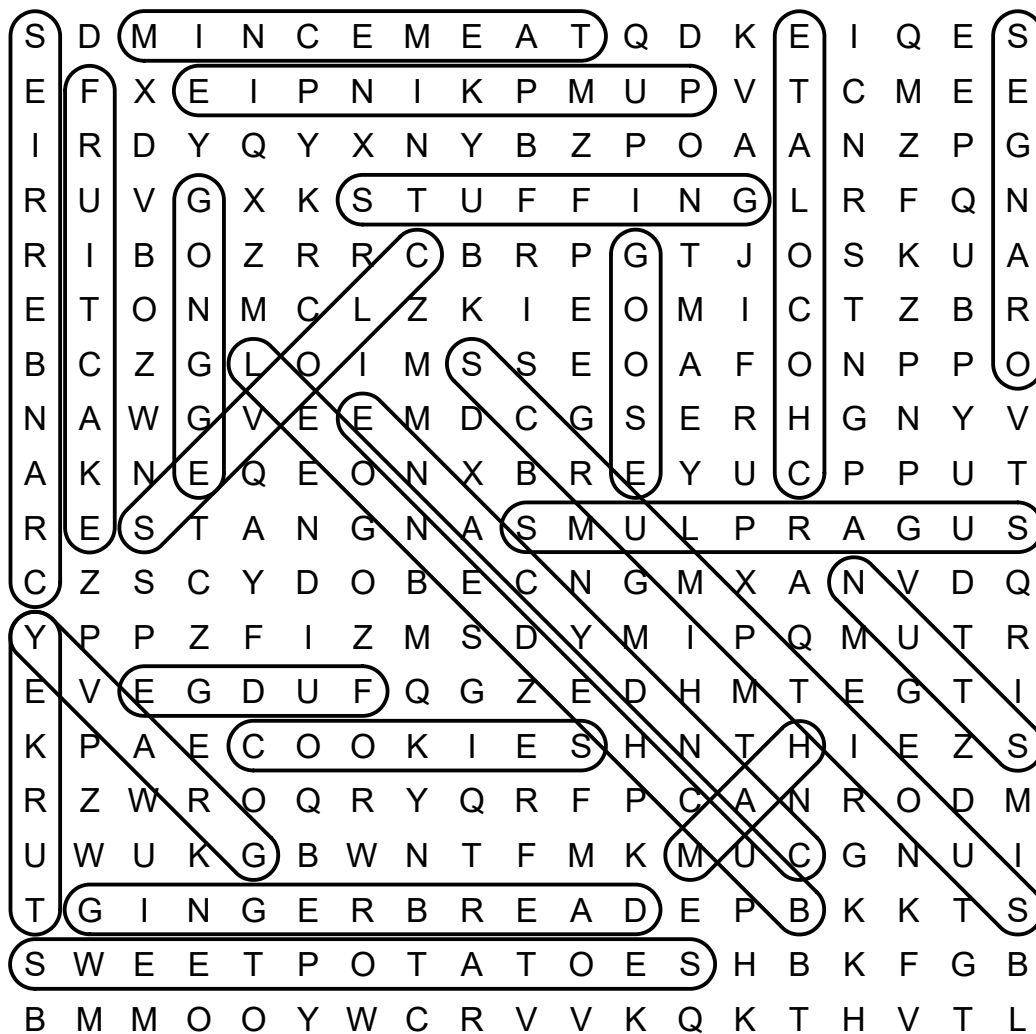
SOLUTION



Christmas Treats

Word Search

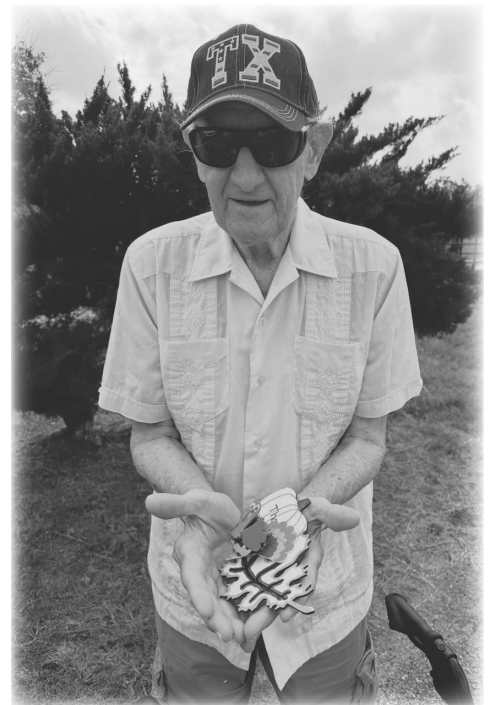
SOLUTION



We have some wonderful children that like to make senior citizen's holidays special!

Our thanks, go out to Addie, Deacon, and Carson Van Booven, for all they do to bring a smile to the senior citizens faces when we deliver meals to their home!

Happy Thanksgiving to our lunch delivery recipients.





GIFTED HEARTS

Hospice & Palliative Care

YOUR STRONG SUPPORT

OUR SERVICES:

- Routine Home Care
- Respite Care
- Continuous Crisis Care
- General Inpatient Care
- Palliative Care
- Physical Therapy
- Psychosocial Therapy
- Bereavement Counseling
- Social Services

HOSPICE CARE

Hospice care focuses on those with life limiting illnesses. Hospice is a philosophy of caring that promotes quality of life by enhancing comfort for you and your loved ones—physically, emotionally, spiritually—with dignity as a fundamental goal of care.

PALLIATIVE CARE

Palliative care focuses on those with serious illnesses which may or may not be terminal. Palliative care provides comfort and symptom relief during the difficult seasons of infirmity.

(830) 715-9299 www.giftedheartshospice.com



JEMIMA CARING

Personal Care Home

OUR SERVICES:

- 24-Hour Support
- Personal Grooming
- Medical Oversight
- Memory Care
- Physical Therapy

ACTIVITIES:

- Physical Fitness
- Cognitive Stimulation
- Creative Workshops
- Outdoor Activities
- Personal Care
- Culinary Delights

WHO WE ARE

We offer a full spectrum of services designed to ensure the highest level of comfort and health for our residents. Our approach integrates professional medical oversight with personalized support, ensuring every individual's needs are met with compassion and expertise.



(830) 369-1782 www.jemimacaring.com

Seguin-Guadalupe County Senior Citizens Center
The Silver Center (a 501©3 Charity)

Membership Application

Business (or Your Name) _____

Primary Contact _____

Address _____

Phone _____ Fax _____

Email _____

Website Address _____

Annual Membership Levels

☐ **Standard PERSONAL Membership** \$ 40.00
(S20 off a room rental)

☐ **Standard Business Membership** \$ 125
(listed in our business membership in the newsletter)

☐ **Gold Business Membership** \$ 250
(listed in our business membership & 1 month free ad in newsletter)

☐ **Platinum Business Membership** \$ 500
(listed in our membership & 2 months free ad in newsletter & 10% discount on a rental)

☐ **Diamond Business Membership** \$1,000
(listed in our membership & 1 year free ad in newsletter & 10% discount on a rental)

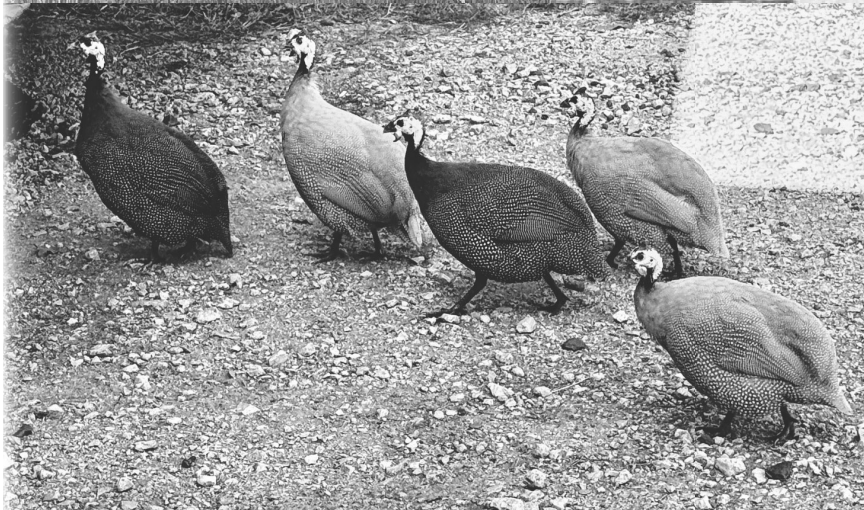
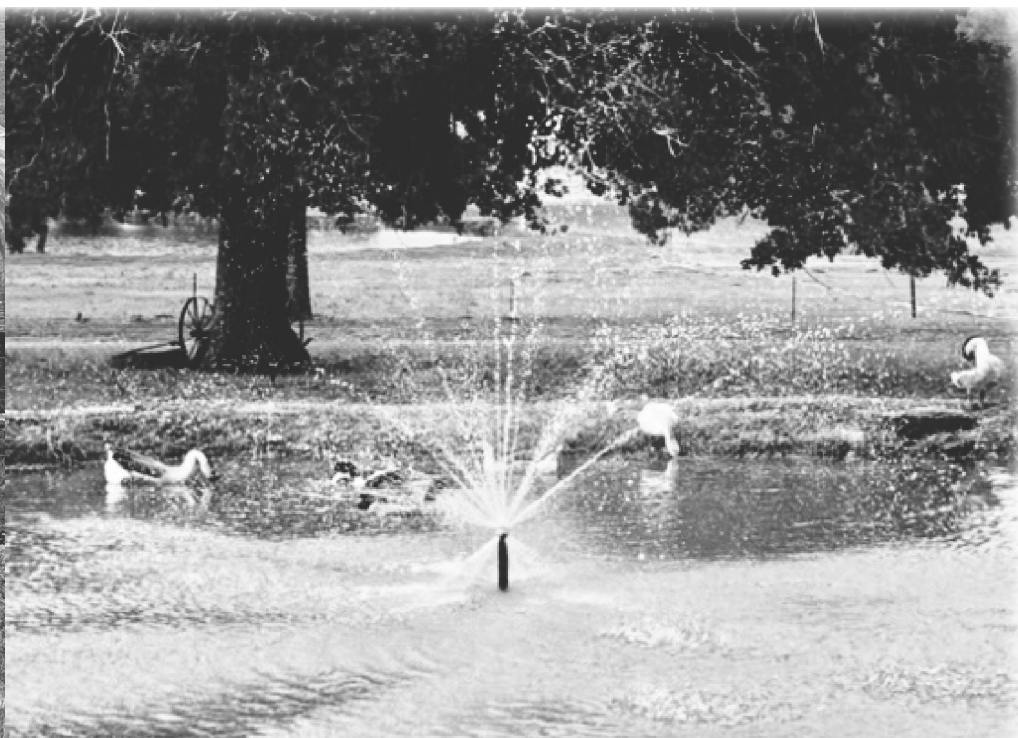
☐ Please invoice to the above address

☐ Make your check payable to "The Silver Center"

Are you interested in:

- ☐ Volunteer opportunities in exchange for business recognition.
- ☐ Providing a "Lunch and Learn" event for the community.
- ☐ Advertising in the center's monthly newsletter.
- ☐ Participation on the Board of Directors level for The Silver Center.

**Norman has been busy building
Glenda a beautiful goldfish pond.
Here are a few pictures of their menagerie in Stockdale.**



MEMORIALS

*** Note that any memorials received after we go to press will be in the next month's newsletter.

You will all be missed...

*In memory of Billy & Bettie
Gene Haese*

Glenda & Norman Partain

In memory of Shelly Lindsey
Glenda & Norman Partain



Memorial in Honor of:

Send Acknowledement to

Name: _____

Address: _____

City: _____

State/Zip: _____

Memorial From: _____

Name: _____

Address: _____

City: _____

State/Zip: _____

Thank you for the remembrance

The Silver Center

510 E. Court • Seguin, Texas 78155

TTHM

Tres Hewell Mortuary, Inc.

Family Owned and Operated

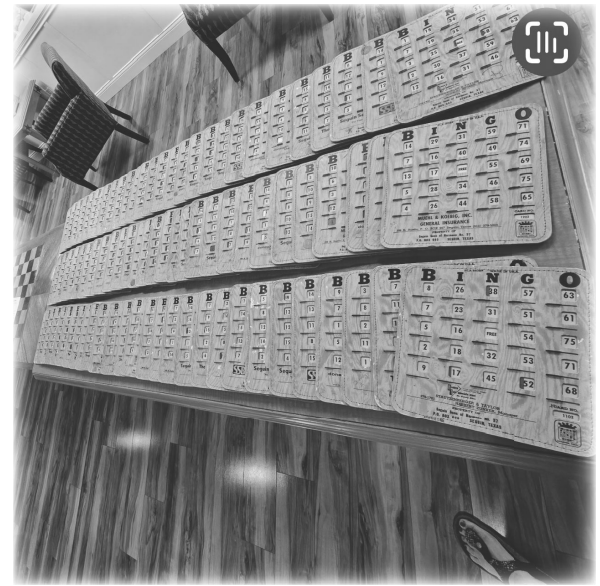
Tres Hewell, President

P.O. Box 820
165 Tor Drive
Seguin, Texas 78156

Phone (830) 549-5912
Fax (830) 549-5918
Cell (830) 660-5809

www.treshewell.com

A huge thank you goes out to Dana Dawson for being our caller this evening, and our fabulous Board of Directors who came out and worked this fun event for the community!



Thank you to our door prize sponsors Jamielizabeth & Lori Lou's!!!!



SEGUIN-GUADALUPE COUNTY
SENIOR CITIZENS' CENTER
510 E. COURT STREET
SEGUIN, TEXAS 78155

U.S. POSTAGE PAID
NON-PROFIT
SEGUIN, TX
PERMIT NO. 23

December 2025



Excellent team. Exceptional care.
Your health is our commitment.



grmedcenter.com • 830.379.2411

Guadalupe Regional
MEDICAL CENTER

